



ANTIK Hospitality Suite

Interactive TV solutions

2020



www.antiktech.com

About ANTİK Technology



ANTİK Technology develops End-to-End IPTV / OTT Solutions for operators, hospitality business, content providers and retailers. It is one of the few global companies with own hardware and software products for complete IPTV ecosystem from acquisition, transcoding, streaming, management, monitoring, protection to middleware smart apps and end-user devices. Our current position on global market benefits from more than 20 years of experience in the area of video processing.

ANTİK's IPTV products are supported by the team of more than 180 employees. Software development teams are based in Slovak Republic (European Union), hardware development team in Czech Republic (EU), logistics and HW manufacturing in Shenzhen, China and customer and technical support covering Asia, Middle East, Europe, Africa, North and South America.

Nowadays our reference clients are spread over the world, using our HD and 4K set-top boxes with state-of-art Antik middleware and smart apps in closed multicast networks, on public internet, in hotels, hospitals even in prisons streaming thousands of live or archived TV channels to end-users located elsewhere with Antik HLS Media Streaming Solution protected by KeyRider Encryption System. We deliver fully customizable End-2-End hospitality IPTV, digital signage, navigation in conference premises, facility management and more to residential projects and hotels in most visited global touristic spots. Antik reception headends, encoders and transcoders together with our CDN components serve content providers worldwide to enable them to have the right linear channels in high picture quality on right place all for minimum running costs.



ORACLE®

Gold
Partner

ANTİK
technology

Contents

Antik Hospitality Suite	4
End-To-End IPTV for your Property	5
Antik Hospitality IPTV Components	6
Antik TV Headend Components	8
Antik 4K/UHD Set-top boxes	10
Antik IPTV Management Server MaxIM	12
Antik Digital Signage Solution	17
Antik Event Navigation System	19
Antik Housekeeping and Facility Management	22
Housekeepers Service menu on guest room TV	24
GRMS - Guest Room Management System	25
Antik Hotel App	26
Antik Passenger Infotainment System	27
Antik BYOD Bring Your Own Device	28
IPTV Solutions all-in one	29
Scheme	31
IPTV DemoKIT 6.0 order	32
Notes	34

ANTIK Hospitality Suite



Integrated PMS:

- Opera
- Comanche
- Horec
- Hores
- Hotel Time
- IDS
- Fidelio

- Guest room interactive TV
- Event navigation
- Digital Signage
- Guest APP
- Housekeeping management

Top-level entertainment for you guests

- Crystal clear HD/4K TV channels
- Welcome screen
- All guest services on TV screen
- Hotel bill, Food ordering, Messaged and more
- On-demand movies
- Catch-up TV
- Content Management System
- Internet apps + Mediaplayer
- Quick setup
- Weather
- Sightseeing info



Validated Integration

Oracle Hospitality

End-To-End IPTV for your property

UHD/4K TV, latest entertainment options, top guest experience

Antik Hospitality delivers easy to set-up turnkey head-end and room premises equipment for live TV integrated with all premises related services and entertainment options. Using Antik 4K set-top boxes you can be sure about future-proof media solution fulfilling highest guest expectations.



All Guest Services on TV screen

Antik Hospitality IPTV brings all your hospitality offers on your guests TV Screen. 24/7 available, easy understandable multilanguage interface increases the chance to sell your food service, relaxation, sightseeing and business guest products. All easy to setup and modify without any need of complicated coding or development.



Top-Notch Fun Features

Perfect to keep your guest entertained any time of the day. Latest HD movies, local sightseeing information, or using DLNA media player to share hotel entertainment database or guests USB storage to allow them to view latest pictures from the busy day spent on attractions. Instant access to web browser and most viewed apps - youtube, facebook, etc.

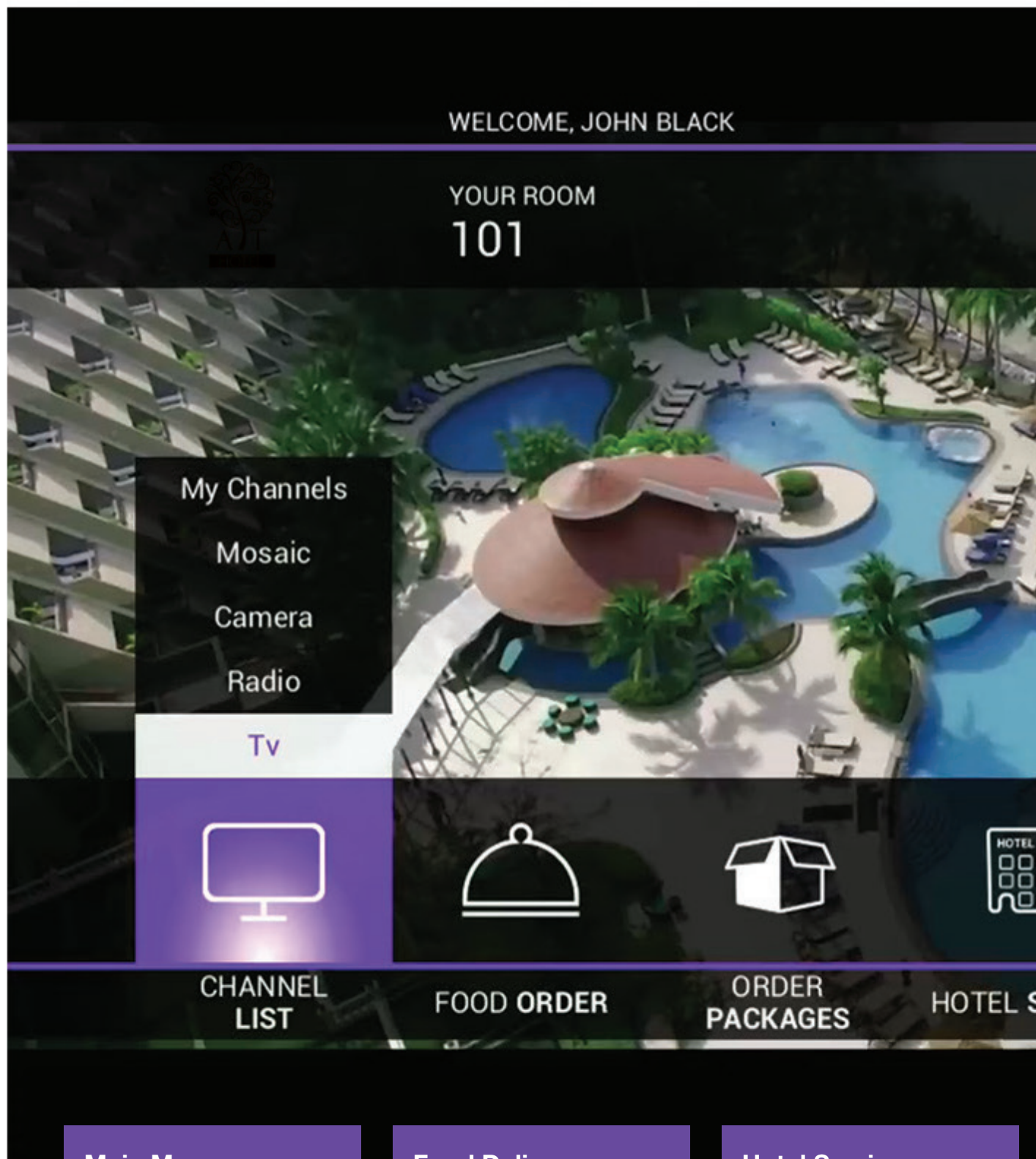


IPTV Management Server MaxIM

The Antik Technology presents a professional cost-effective SW solution for a seamless management of your Antik set-top box and Mobile Application network. MaxIM is the corner stone of Antik Middleware Server Family. You can easily define your channel packages, configure all or only selected customers' STBs, collaborate with other part of the Antik Server Family such as Antik Archive Servers, Antik Mosaic Servers and VoD servers. The MaxIM management server SW can be easily connected to your billing or to the customer care application, so that your users' set-top boxes will be automatically activated and monitored using the same software your employees are familiar with.



ANTIK Hospitality IPTV Components



Main Menu

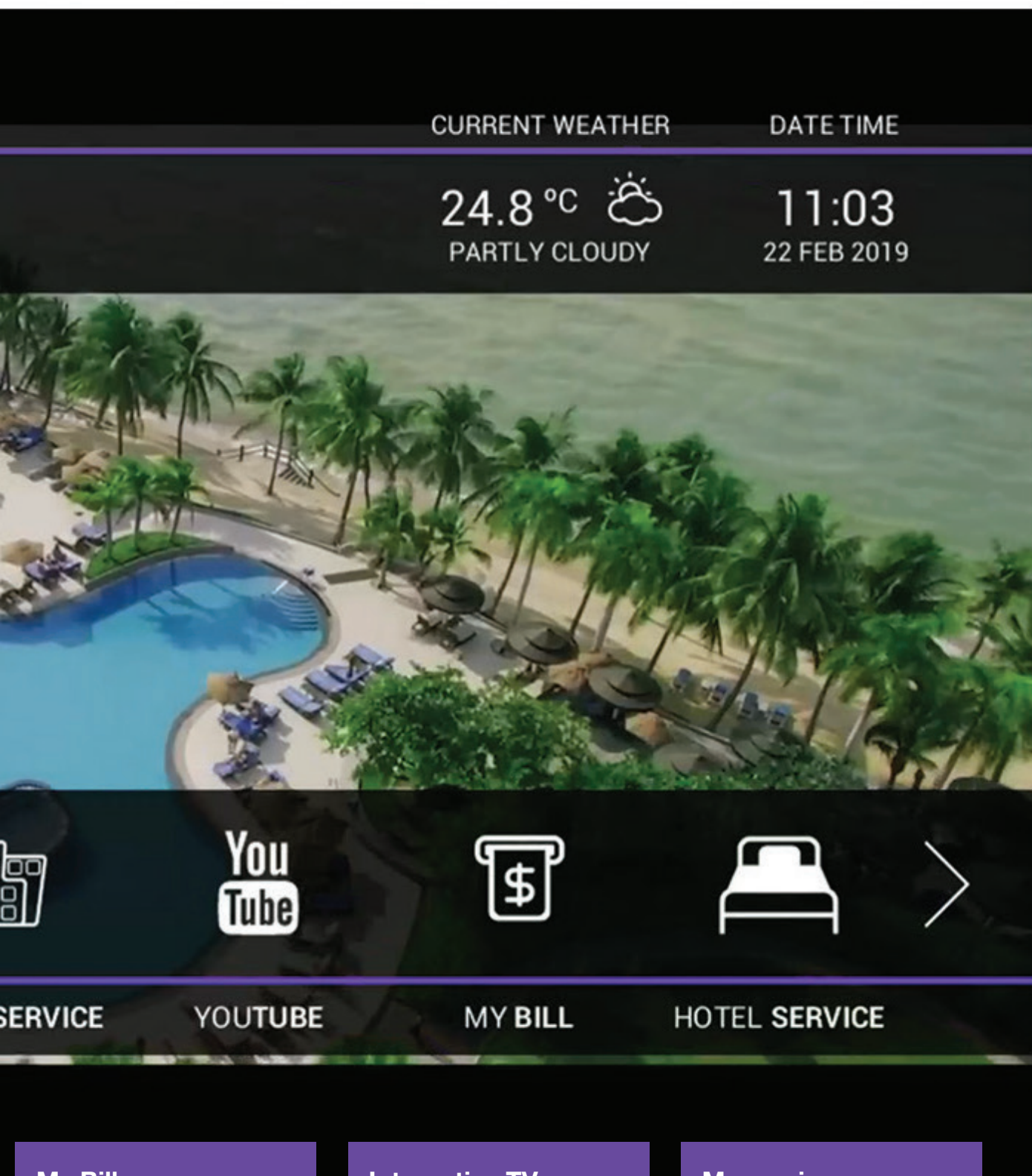
Easy to navigate customisable interface with direct access to food delivery, video on demand, my bill and other upsell and cross-sell options.

Food Delivery

All your room-service offer is now available via guest TV set. The only thing that a guest has to do is select food option and confirm by OK button. All guest requests appear on reception dashboard or in your hotel system instantly.

Hotel Services

Hotel can easily add or remove its products and services - from wakeup calls, through massages, restaurant or tours reservations to taxi orders. Everything is managed by content management system and the result appears without any intermediary work on guests TV sets.



My Bill

Interactive TV

Messaging

Thanks to integration with your hotel PMS, all guest orders ordered through IPTV or other hotel departments will appear on one simple table for guest to review before check-out.

UHD TV, Electronic Program Guide, timeshifted TV and movies on demand all on your guest room screens. Media Player, web access and internet apps will complete the guest experience.

All messages from reception appear on TV screens immediately. Older messages are stored in guests inbox on TV, notifications as well as scrolling messages are available too.

ANTIK TV Headend Components

Antik GX 5000

Digital Contents Processing Platform



Antik Digital Contents Processing Platform GX 5000 brings a compact, powerful and flexible solutions that allow the users to build or update DTV or IPTV headend to meet the requirements of today's new network architectures. GX 5000 is a compact 1U platform capable of processing a high number of streams. By inserting up to 6 optional functional modules and pluggable MUX/Scrambler extended modules, GX 5000 integrates all DTV headend functions, such as DVB signal reception, descrambling, encoding, transcoding, remultiplexing, scrambling and modulation into one single unit.

Key Features

- Maximum data throughput 49Gb/s
- 16 TS processors on the main board, 10Mb/s bandwidth for each TS processor
- 2SFP BbE IP ports with maximum 920Mbps input and output data rate
- Up to 256 MPTS/SPTS TS/IP input and 512 MPTS/SPTS output without IP-FEC
- Up to 24 MPTS/SPTS TS/IP input and 24 MPTS/SPTS output with IP-FEC
- PSI/SI edition and re-generation, PID re-mapping and filtering
- Control and monitoring by Front Panel, Menu, Web and SNMP
- Total 6 slots for different digital TV functional modules: modulator, demodulator, encoder, trans-coder, decoder, interface adapter, etc.
- Removable cooling fan assembly with alarm & speed control
- Dual hot-swappable power supplies units
- 1RU rack with display screen, 6 buttons, RS-232, USB

Antik TR 6265 Transcoder

HiDensity IP-to-IP HEVC FullHD transcoder



New ANTIK Hi-Density HW Transcoder is great for telco-grade IP-to-IP FullHD H.265 transcoding for all operators and OTT providers scenarios.

Key Features

- up to 24 channels/1U unit
- SoC HW transcoding system with very low power consumption

Video Encoding Specification

- H.265 MP@level 5 main tier and H.264BP/MP/HP@level 4.2 video encoding
- maximum 12 x 1080p @ 30 fps or 24 x 720p @ 30 fps encoding
- VBR or CBR mode
- Low-delay encoding
- Encoding of multiple ROIs

Video Decoding Specification

- H.265/HEVC (Main/Main 10 profile @ level 5.1)
- H.264/AVC (BP/MP/HP @ level 5.1)
- VP9 (Profile 0/Profile 2 @ level 5.1)
- MPEG 4/2/1, VC - 1/WMV9, VP8/VP6, AVS, REAL 8/9/10, DivX 3/4/5/6 and some other legacy codecs

Antik MX 5308 Receiver

8 x Tuner T/T2/C/S2/ISDB-T IRD



The MX-5308 is a high-density, modular and CI decryption professional TS processor equipped with 8 independent tuners, which can be any of the DVB-T/ T2, DVB-S2/S, DVB-C, DTMB, ISDB-T or ATSC type. It supports a wide range of application by combining 8 tuners processing capability with industry standard outputs including ASI and TS/ IP. The MX-5308 has 8 DVB common interface slots capable of working with the most of the well-known CAS in the market to de-crypt multiple pay TV services. The MX-5308 provides operators with an ideal solution for multi receiving, remultiplexing, descrambling and TS over IP operations, the compact 8 tuners and the powerful 8 CI decryption design which makes it one of the most competitive products in the head-end market.

Key Features

- 8 x Tuners Input, Supports variety of input options DVB-T2/T/ S2/S/C/DTMB/ATSC/ISDB-T
- Supports DVB-S2 Input Stream Identifier (ISI, optional) and DVB-T2 Multi PLP and SFN MIP pass through
- Built-in TS re-multiplexer receives from ASI, CI Slot1 to CI Slot8 and TS/IP inputs
- 8×DVB-CI Slots, multi-program decryption, BISS-1 and BISS-E decryption
- 8xASI output the transport stream from CI Slot1 to CI Slot8 or
- BISS decryption
- 1xchannel full duplex TS over IP or 9xchannels IP out without IP input
- Remote Control and Supervision by SNMP v2, HTTP WEB and Proprietary HDMS software
- On Site software update through IP or USB
- RSSI, received signal strength, Eb/N0, C/N and BER monitoring
- Redundant power supply

Antik EN 8000 Encoder

8-way Integrated HDMI/CVBS Encoder



ANTIK EN 8000 consists of two 4-way (total 8) H.264 / MPEG-2 encoder modules, TS reMultiplexer. All encoders are real time and independent operated. Each encoder accepts one stereo program through its HDMI (HD or SD) input, or CVBS(SD) Input. These programs encoded are multiplexed onto one Transport Stream (TS). The essential PSI/SI tables of the TS, including LCN (Logical Channel Number), are generated automatically and are editable by user. This TS Stream is also available through the TS/IP port on the front panel with 3 modes: Full Duplex, 128 IPTV & 32 IPTV with 2 RJ-45 ports.

Key Features

- Compliant with H.264/AVC HP@L4.0 & MPEG-2 MP@ML
- Supports MPTS & SPTS, Re-multiplexed integrated
- Total bitrate up to 400Mb/s at 128 IPTV Mode
- Total bitrate up to 200Mb/s at 32 IPTV Mode with both RJ-45 port
- Total bitrate up to 80Mb/s at Full Duplex Mode
- HD/SD Video Resolution: 1080i, 720p, 576i, 480i
- MPEG1-L2, MPEG-2/4 AAC-LC/HE-AAC Audio Encode
- Remote control/monitoring with SNMP and HTTP/Web interface
- Two Redundant Power Supplies

ANTIK 4K/UHD Set-Top Boxes

Antik Nano 3

Hybrid/OTT IP+DVB Set-top Box



Key Features

- CPU 4 x Cortex A53 (15000 DMIPS)
- GPU Mali-450
- 4K HDR or dual Full HD decoding
- High Efficiency Compression Codecs Decoding - VP9 Profile 2 Support
- Wi-Fi 802.11 ac Access Point (optional)
- Modem
- SmartHome Z-Wave (optional)

Back Panel Interface



Nano 3 OTT



Nano 3 S (DVB-S2+IP)



Nano 3 C (DVB-C2+IP)



Nano 3 T (DVB-T2+IP)



Nano 3 - 4 PORT



Nano 3 - 4 PORT (side panel)

Side Panel Interface



Nano 3 C/T (DVB-C2/T2+IP)



Nano 3S - side panel

Specifications

Video

- H.265/HEVC (10-bit)
- H.264/AVC
- VP9 (10-bit), VP6/VP8
- MPEG-1/2/4
- VC-1/WMV9
- Real 8/9/10
- Divx 3/4/5/6

Audio

- AAC (HE-AAC v2 Profile)
- Dolby Digital (AC-3)
- MPEG-1/2 (layer I/II)
- MP3
- FLAC, Vorbis

Streaming

- MPEG-2 transport stream
- Multicast or Unicast
- TS over UDP
- TS over RTP
- HTTP streaming
- RTSP (with trick play support) for VoD
- Teletext and subtitles
- IGMP v2 & v3
- HLS

Inputs / Outputs

- HDMI 2.0a
- AV output (CVBS, L+R audio)
- TOSLINK (S/PDIF optical audio interface)
- 1x RJ45 (Ethernet 10/100BaseTx)
- 1x USB 3.0 + 1x USB 2.0
- CI Slot (NANO 3S)
- external IR sensor
- antenna RF input (only on selected models)

Technical Specification

- Dimensions 115mm x 115mm x 32mm (without packaging)
- Power Consumption 6W
- Power Input 12V/1A DC
- Power Adaptor 90-250V/50-60Hz AC
- Operating Temperature 0°C to 45°C
- Operating Humidity 8%-95% (non-condensing)

CAS/SCRAMBLING/DRM

- AntikCrypt
- Conax
- Widevine

Software Ingeragtion

- Operating system Linux 3.18 / 4.4
- Copy Protection HDCP 2.2
- Ekioh SVG integrated

Middleware

- ANTIK MaxIM Middleware 2.0

Accessories (optional)

- IR2 Extender cable
- AV Cable adaptor
- RCA/SCART cable
- Ethernet Cable
- Full size/Compact Keyboard
- Bluetooth Remote control
- WiFi Adapter

Application

- Telco IPTV
- Hotel IPTV
- OTT IPTV
- DTH
- Digital Signage

Hardware

- CPU: HiSilicon Hi3798MV200 4x ARM Cortex-A53 (15000 DMIPS)
- GPU: ARM Mali-450
- DRAM: 1GB DDR4
- Flash: 8GB eMMC
- Wi-Fi: 802.11 b/g/n (2.4GHz , 1T1R, 150M)
- 868 MHz SmartHome gateway (optional)
- DVB-S/S2/T/T2/C tuner (optional)
- CAS Card reader slot (optional)
- Modem

Hidden STB with external IR sensor

2nd IR receiver in the guest room and HDMI-CEC control



ANTIK IPTV Management Server **MaxIM**



Antik Technology presents a professional cost-effective SW solution for a seamless management of your Antik Hospitality Suite. MaxIM is the corner stone of Antik Middleware Server Family. You can easily define your channel packages, configure all or only selected customers' STBs, collaborate with other part of the Antik Server Family such as Antik Archive Servers, Antik Mosaic Servers and VoD servers. **The MaxIM management server SW** is already integrated to major PMS's, so that your users' set-top boxes will be automatically activated and monitored using the same software your employees are familiar with. Signage, Guest Apps, Guest navigation and Housekeeping is controlled same interface too.

Key Features

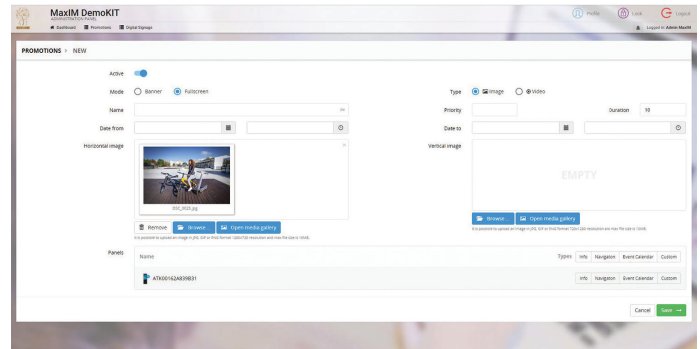
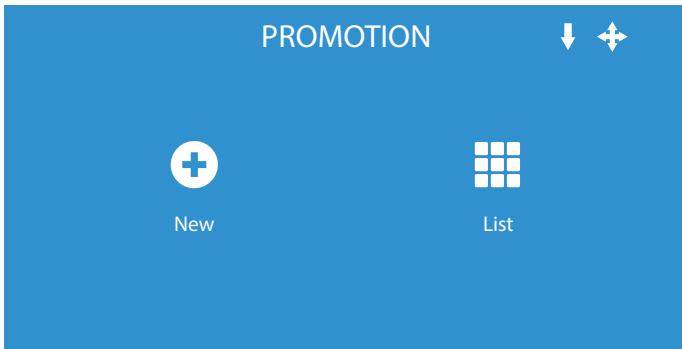
- Simple channel and TV channel packages management
- Digital Signage - Promotions and Event Navigation Solution
- Integration and control of Mobile Application
- Hospitality features, welcome message, background image, language options etc. in the same platform
- Housekeeping Management
- Full remote control of set-top boxes and remote restart features (even in public internet)
- Remote set-top box firmware update
- Electronic Programme Guide database management and seamless EPG content import
- Integrated with other components of Antik Server Family
- STB management and user database
- Viewer statistics (users, channels, time,...)
- SNMP Communication Support
- Instant messaging to STBs
- PMS Integrated: Oracle Opera, Fidelio, Micros, Comanche and more



ANTIK IPTV Management Server **MaxIM**

Hospitality features

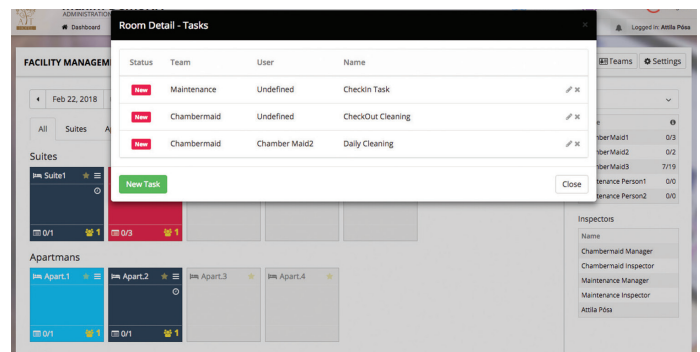
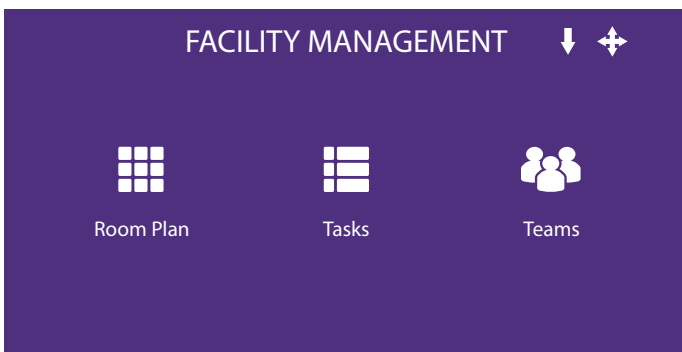
Promotion module



Promotion editor screen.

Promotion Module is designed for creating, editing and managing promotions such as event promotions, advertisements, campaigns, special offers, and others. Once created, promotions are then showcased on the digital signage panels, located in public areas in the hotels, companies, etc. It allows to add pictures and videos in most popular formats.

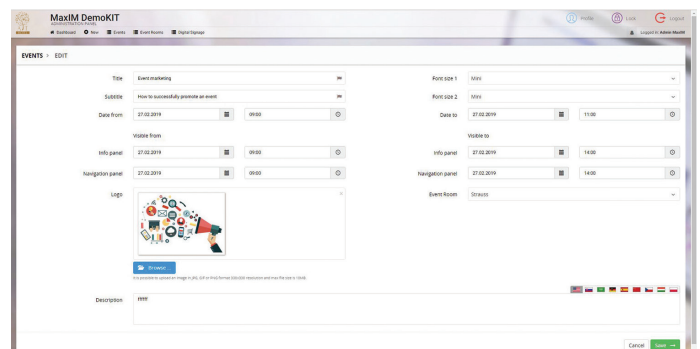
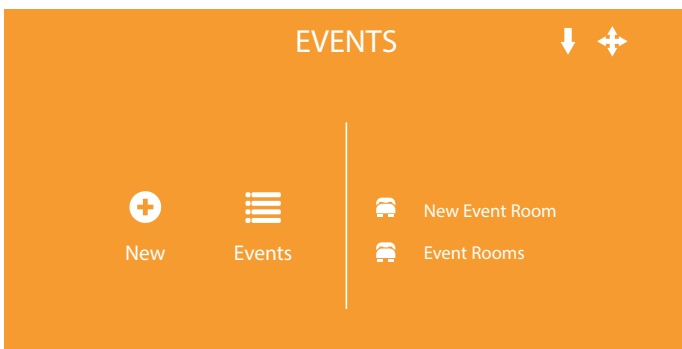
Facility management module



Display of assigned tasks to the room.

It provides with the housekeeping solution and you can manage and track cleaning progress in hotel rooms, assign various tasks and manage teams responsible for cleaning process. There are three main features, namely room plan, tasks, and teams which allow you to control the operation of facility management.

Events module

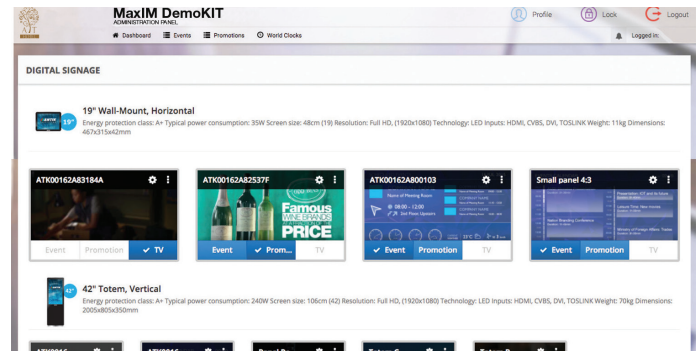


Event editor screen.

It offers event management solution that helps you to streamline event planning and with this module, you can keep your event management up-to-date, create new events and event rooms, as well as access and edit planned events and event rooms.

ANTIK IPTV Management Server MaxIM

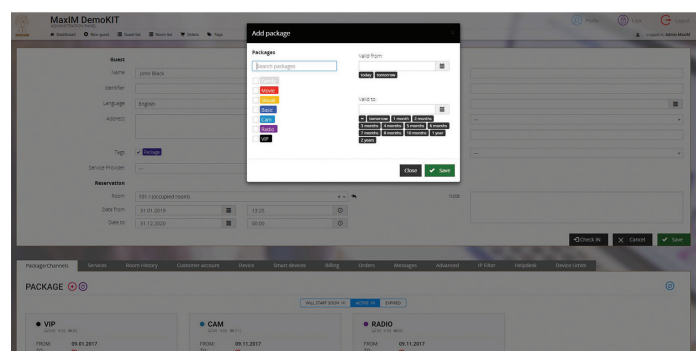
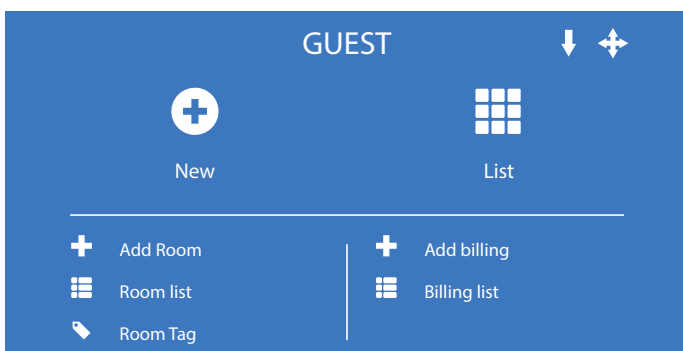
Digital signage module



One click change of screen

DIGITAL SIGNAGE Module is where you find the tools to manage digital signage devices and its metadata. Built-in tools provide an opportunity to set up mode, screen, screen rotation, background, event calendar, navigation to the event rooms, assign promotions, and view or edit the default world clocks.

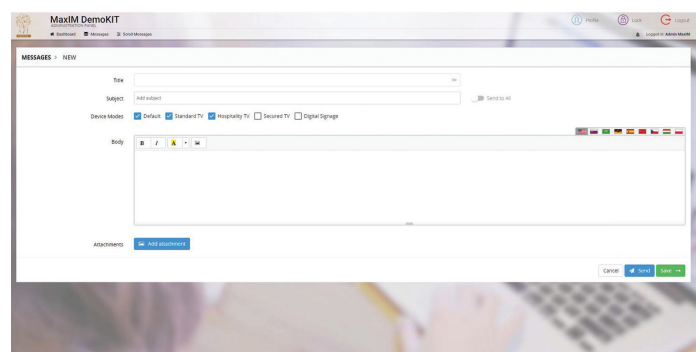
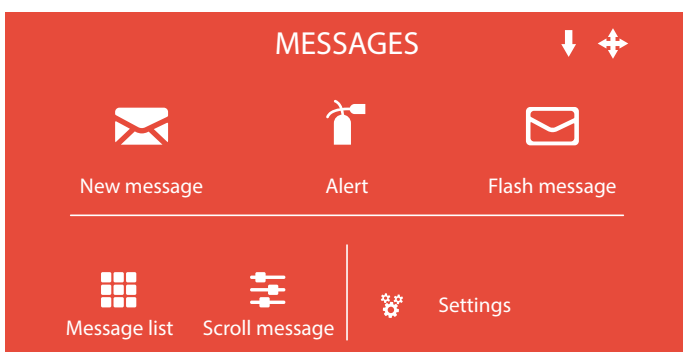
User / Guest module



Assigned packages and channels to guest/users.

USER/GUEST Module brings an opportunity to manage data about guests/users and products, As well as services provided and activated to the guests/users. There is also a possibility to create groups of guests/users according to different constants (e.g. in case of hotel, there can be an apartment, VIP room, non-smoking room, etc.).

Messages module

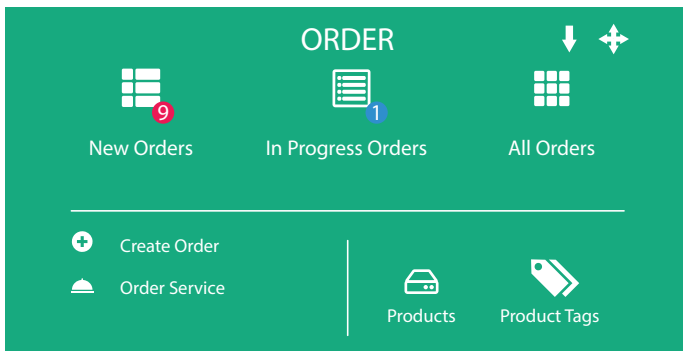


New message configuration

The MaxIM allows the user to send a message to a specific STBox, or to a group of STBoxes. You can send three types of messages - normal (send to the message box in the GUI menu), flash (instant messages for a selected group of set-top boxes), scroll messages.

ANTIK IPTV Management Server MaxIM

Order module

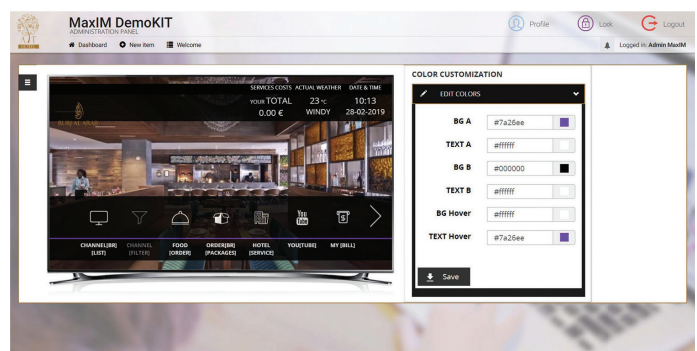
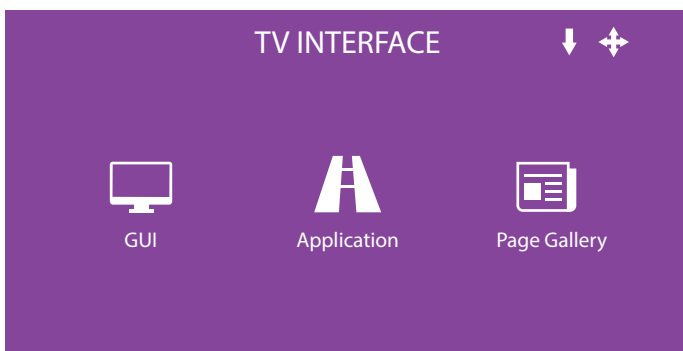


Order Number	Order Reference	Order Quantity	Price	Date range
1. % Clean House	% 100	unlimited	5000	22.02.2019 10:00
2. % Apartment	% 100	Q:15.00	5000	22.02.2019 11:00
3. % Order Test	% 100	Q:11.00	5000	22.02.2019 11:00
4. % Workshop Call	% 100	Q:10.00	5000	22.02.2019 11:00
5. % Order House Book	% 100	000012	5000	22.02.2019 11:00
6. % Apartment Big Breakfast	% 100	000011	5000	22.02.2019 11:00
7. % Champagne	% 100	000009	5000	18.07.2019 10:00
8. % Mineral Water	% 100	000008	5000	18.07.2019 10:00
9. % SmartTV Blue	% 100	unlimited	5000	28.04.2019 10:00
10. % Breakfasting	% 100	000004	5000	05.06.2019 10:00
11. % Order House Book	% 100	000003	5000	10.05.2019 10:00
12. % Clean House	% 100	unlimited	5000	10.05.2019 10:00
13. % Apartment	% 100	Q:10.00	5000	10.05.2019 10:00
14. % Order Test	% 100	Q:10.00	5000	10.05.2019 10:00
15. % Workshop Call	% 100	Q:14.00	5000	10.05.2019 10:00
16. % Apartment	% 100	Q:11.00	5000	18.02.2019 10:00
17. % Workshop Call	% 100	Q:10.00	5000	18.02.2019 10:00
18. % Clean House	% 100	unlimited	5000	18.02.2019 10:00

List of orders

ORDER Module is providing opportunity to guest/users to order products and services and it also includes the tools for managing, creating and adding new products or services. The user of the MaxIM administration panel can add both food menu content and services content to make it available for the guests to order through ORDER module. Doing so, the MaxIM user should edit the GUI menu, i.e. add already created content.

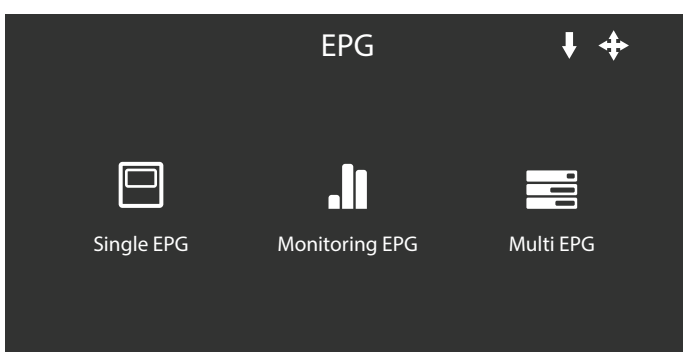
TV interface module



GUI menu item's tools.

TV INTERFACE Module provides full-scale content management system to adapt user interfaces based on your visual identity and insert all necessary TV features and informations.

EPG module

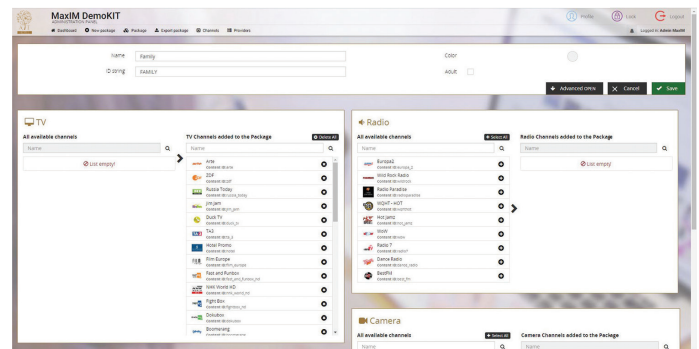
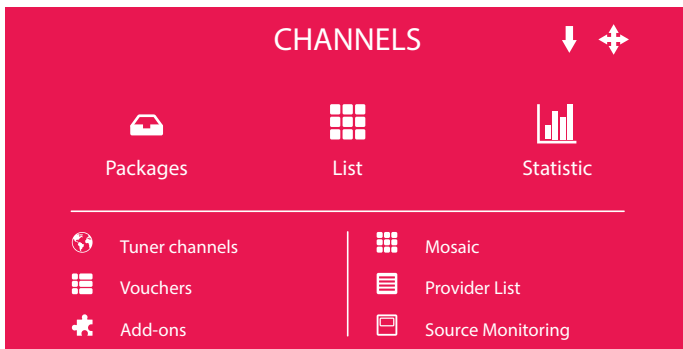


Multi EPG preview.

An electronic program guide (EPG) is an application to list current and scheduled programs that are or will be available on each channel and a short summary or commentary for each program. EPG Module of the MaxIM brings single EPG (EPG filtered by a specific channel), Multi EPG and monitoring of EPG.

ANTIK IPTV Management Server MaxIM

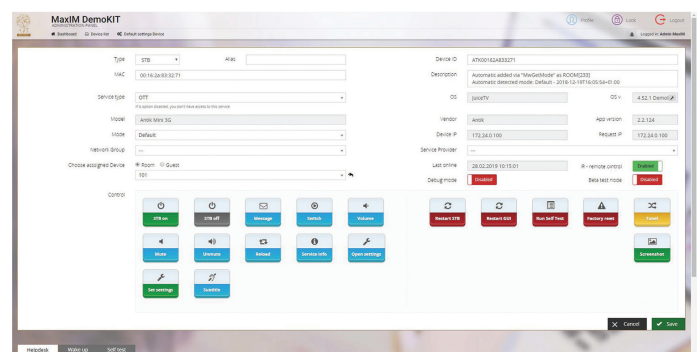
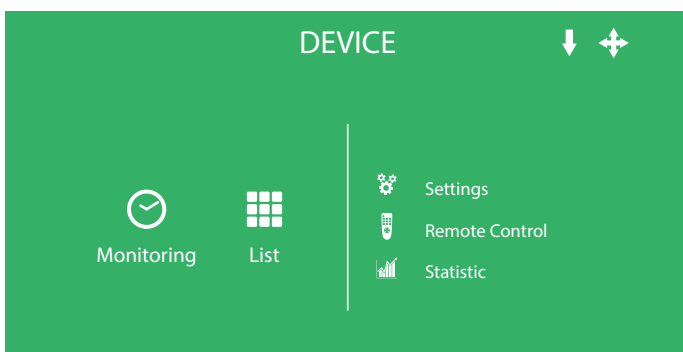
Channels module



Advanced options of channel settings.

CHANNELS Module involves the administration of TV channels, Radio channels, Cameras and TV packages. The user has the opportunity to sort them to the packages and assign specific packages to specific user/guest.

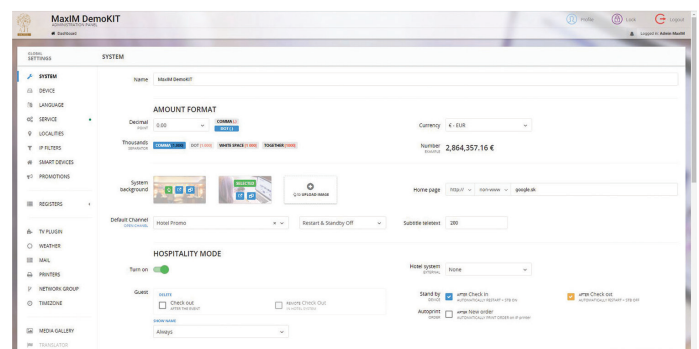
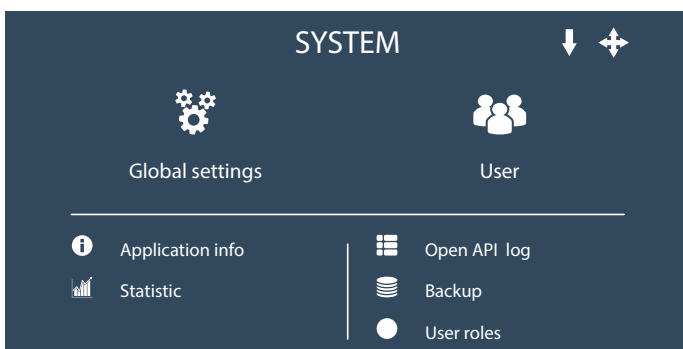
Device module



Device editor screen.

It gives an overview of the registered devices and provides the tools for administration of devices, their monitoring, remote control or the possibility to assign a new device to room or a guest and define a mode, in which a new device should operate.

System module



Hospitality mode switch in System Settings.

SYSTEM Module is designed for the management of the system settings within the MaxIM administration panel, including global settings, user, application info, statistic, open API log, backup, and user roles.

ANTI-K Digital Signage Solution

Comprehensive Multimedia Advertising Delivery System



Key Features

- complex advertising delivery system
- combination of live TV streams with standard multimedia designing components available
- large variety of indoor & outdoor LED TV panels
- low power consumption
- UHD & Full HD resolution
- low operational costs

We created low-investment and low operational costs LED panel system controlled by state-of-art ANTIK DS Management System MaxIM. You can either upload ready to publish campaign delivered by your advertising clients or build your own campaign. To design the campaign, all standard multimedia components can be used – pictures, music, video (even in combination with live TV channel broadcasting) all mixed with many eye-catching effects.

TV panels itself are controlled by low-power Antik DS set-top boxes. In comparison to Intel PC based panels, in each project you save significant investment money, not mentioning dramatically lower power consumption and quiet operation (no fan on set-top box necessary).

ANTIK Digital Signage

Totem 55" vertical outdoor with Double Car Charger

Typical power consumption: 22kW
Screen size: 55"
Inputs: HDMI, CVBS, DVI, TOSLINK



Leaflet holder 26" vertical indoor

Typical power consumption: 65 W
Screen size: 66 cm (26")
Inputs: HDMI, CVBS, DVI, TOSLINK
Weight: 50 kg
Dimensions: 1850 x 750 x 610 mm
Use Cases: Retail Shops, Exhibition Stands



Totem 47" single-screen outdoor

Typical power consumption: 120 W
Screen size: 119 cm (47")
Inputs: HDMI, DVI, VGA, USB
Weight: 150 kg
Dimensions: 800 x 230 x 1800 mm
Use Cases: Office/Public Building Entrances, Public Places Advertising



Totem 55" dual-screen outdoor

Typical power consumption: 600 W
Screen size: 139 cm (55")
Inputs: HDMI, DVI, VGA, USB
Weight: 220 kg
Dimensions: 880 x 300 x 1950 mm
Use Cases: Office/Public Building Entrances, Public Places Advertising



Totem 55" single-screen outdoor

Typical power consumption: 600 W
Screen size: 139 cm (55")
Inputs: HDMI, DVI, VGA, USB
Weight: 220 kg
Dimensions: 880 x 300 x 1950 mm
Use Cases: Office/Public Building Entrances, Public Places Advertising



Wall-mount 10"/19" horizontal panel indoor

Typical power consumption: 35 W
Screen size: 25 cm (10")/(48 cm (19")
Inputs: HDMI, CVBS, DVI, TOSLINK
Weight: 11 kg
Dimensions: 467 x 315 x 42 mm
Use Cases: Conference Room Schedule, Office Corridors Navigation



Wall-mount 42" horizontal panel indoor

Typical power consumption: 240 W
Screen size: 106 cm (42")
Inputs: HDMI, CVBS, DVI, TOSLINK
Weight: 38 kg
Dimensions: 1075 x 335 x 150 mm
Use Cases: Retail shops Advertising, Hotel Lobby Navigation



ANTIK Event Navigation System

State-of-Art digital content delivery system to improve your visitor experience.

KEY FEATURES

- flexible event planning tool
- variety of visual templates
- easy adaptable to your visual identity
- remote control of end-points
- mixed digital signage and navigation roles
- indoor and outdoor durable HD screens
- weather info, world clock and other metadata

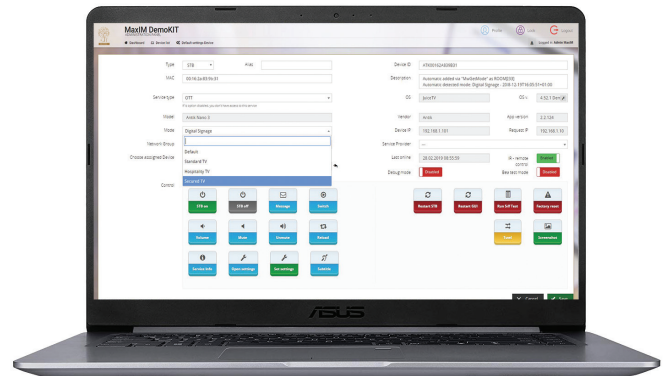
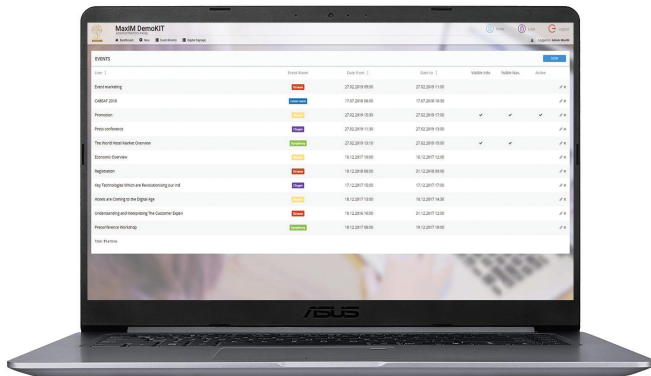
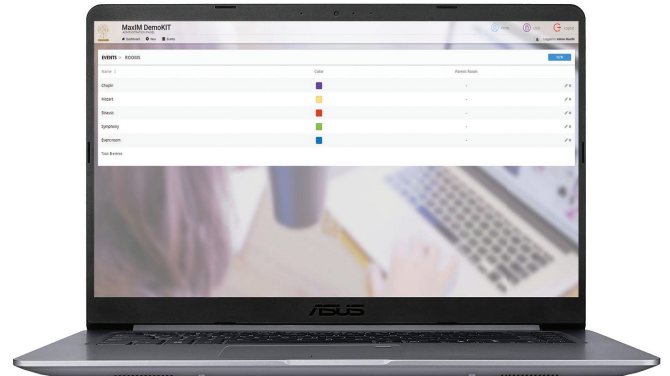
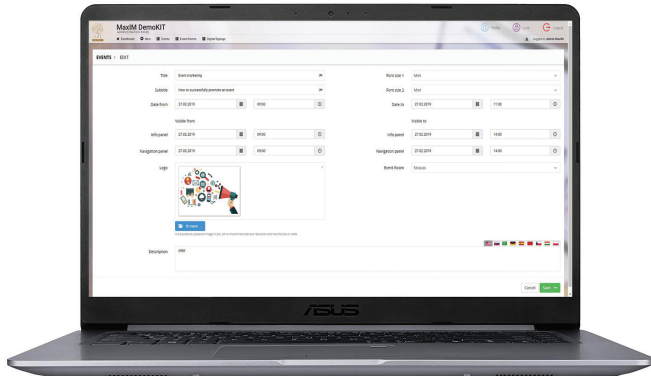
Content Management System MaxIM

Manage the information displayed on navigation panels. Make sure your guests get right guidance to be on time at the right meeting point. Easy operation enables very fast content update.

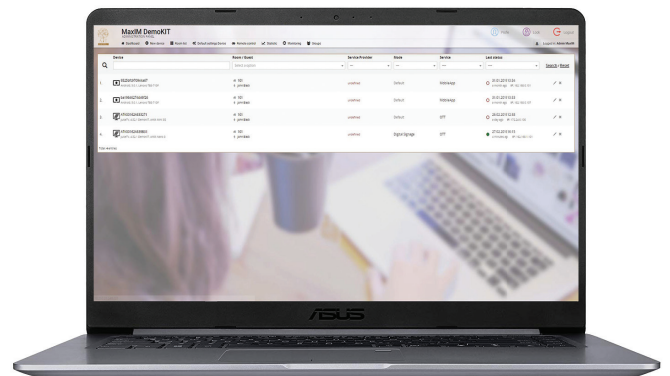
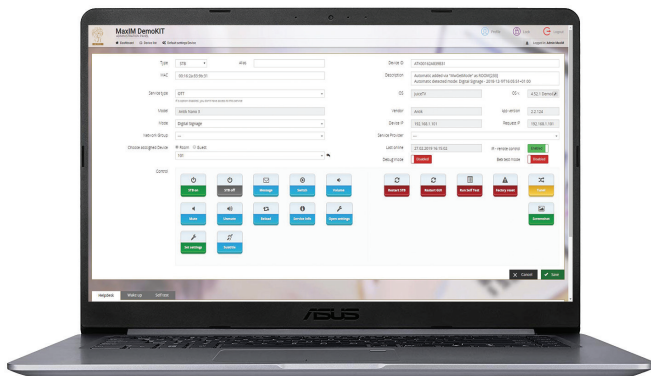


ANTIK Event Navigation System

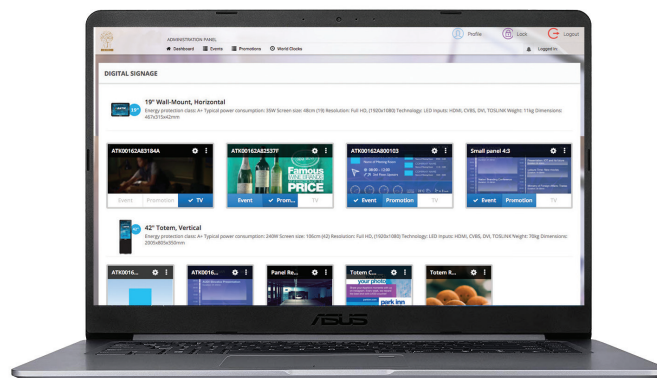
Event planning tool



Remote screen control



One-click change of screen role



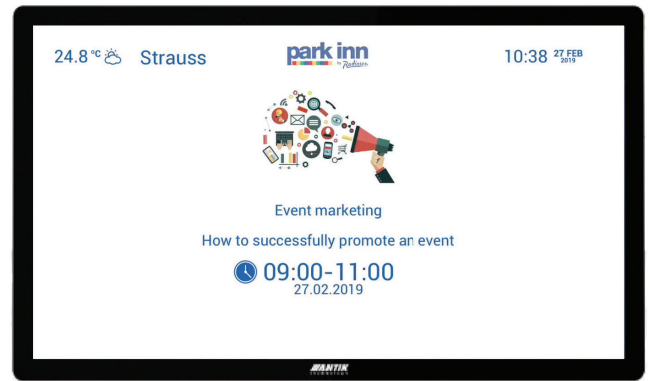
ANTIK Event Navigation System

Variety of templates

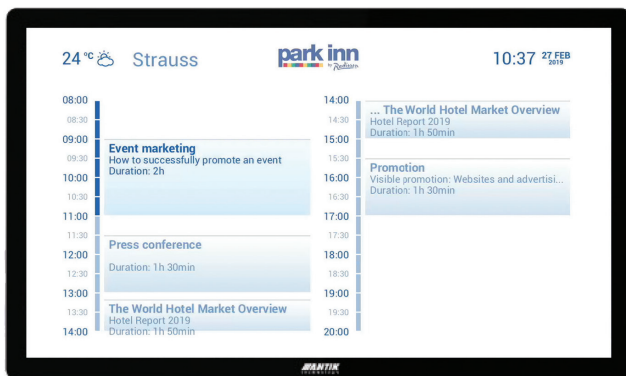
Navigation totem



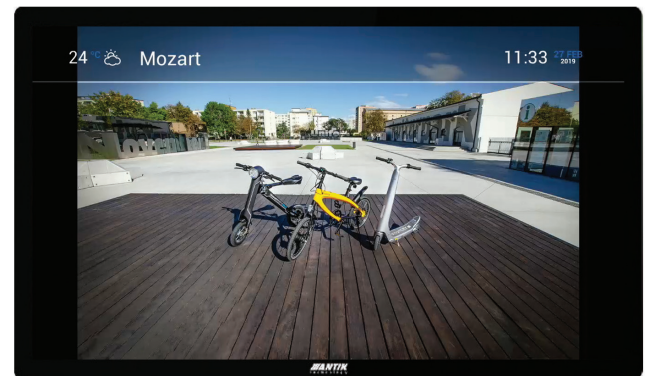
Room entrance screen



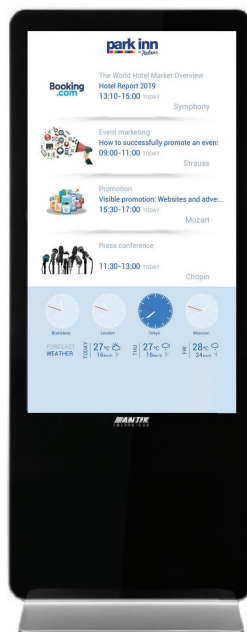
Room entrance daily schedule



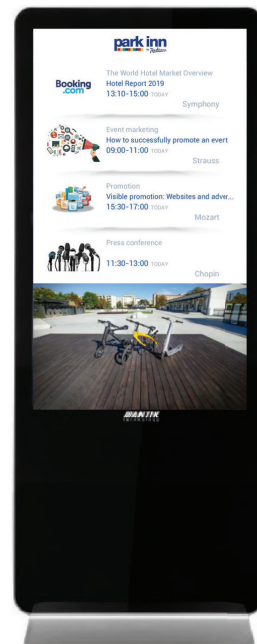
Room entrance with advertising



Vertical navigation screen

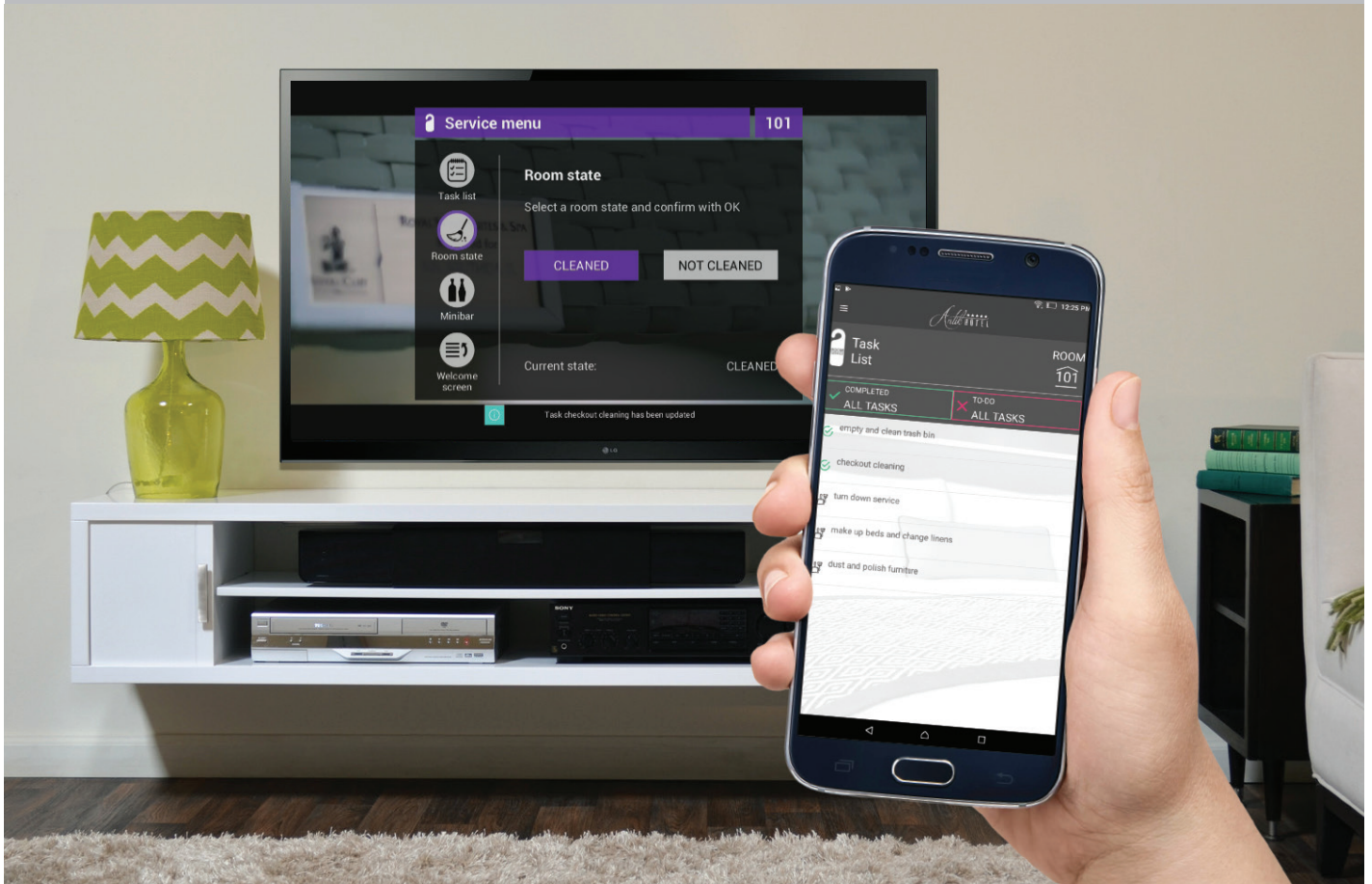


Vertical navigation totem combined with advertising



ANTIK Housekeeping and Facility management

Smart cleaning and maintenance under control-anywhere



Antik Housekeeping and Facility Management helps you to bring your guest satisfaction to another level. Fully integrated to your PMS, system check data about room occupancy and based on your own predefined templates creates every day cleaning tasks – automatically! It allows you to copy typical chambermaids room allocation from any day from the past to simplify your morning routines. Due to the system flexibility you can add manual tasks anytime. On the simple dashboard you can follow, what is the cleaning and inspection status of the rooms. System automatically reports to PMS when the room is done, so next guest can be checked-in quickly – without unnecessary waiting in the lobby. Your inspectors and managers can overlook the situation from any place as the interface is easily readable on tablets or any other smart devices – no need to return back to the office. Based on your selection, housekeepers can confirm their tasks either on guest room TV sets or via smartphone applications. SOS button for chambermaids to bring attention in unusual situations.

KEY FEATURES

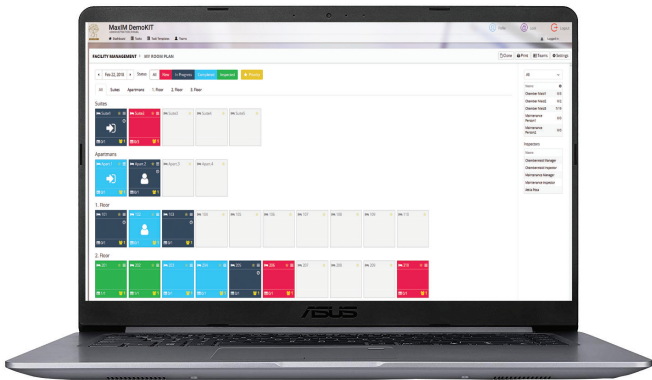
- automated housekeeping tasks planning tool
- personnel task allocation cloning to simplify daily routines
- daily tasks status under control in dashboard
- repeating cleaning tasks templates definition tool
- fully integrated to major PMS
- room maintenance tasks queues
- PC, Tablet, SmartPhone and TV apps for managers, inspectors, maintenance and housekeepers

ORACLE®

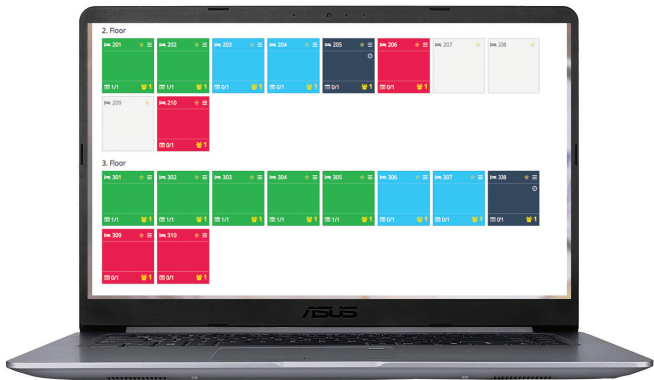
Validated Integration

Oracle Hospitality

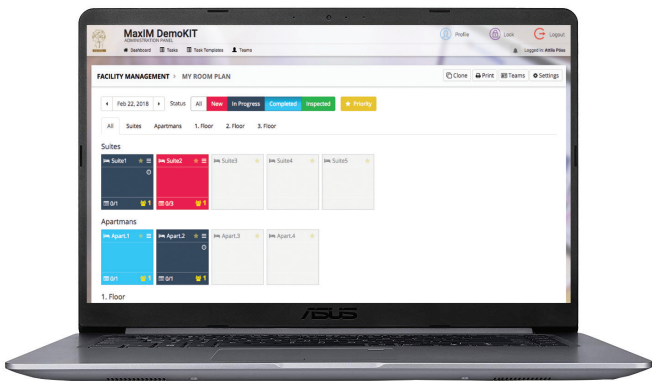
Roomlist



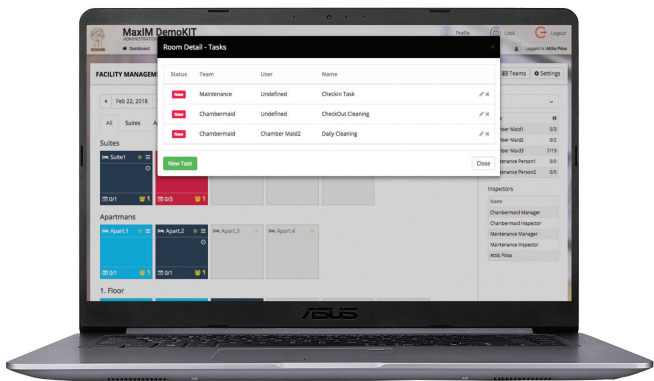
My room plan



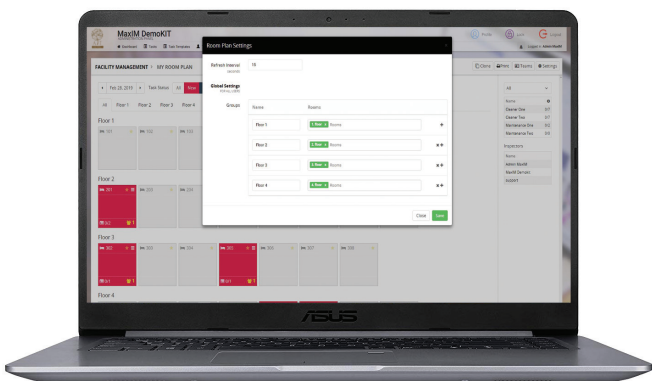
My room plan 2



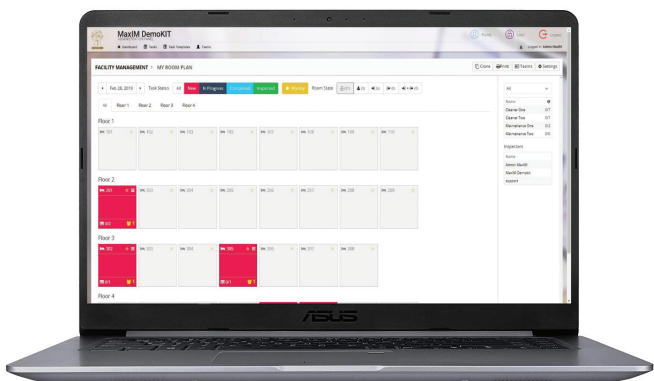
Room detail



Room plan settings



Teams of cleaners and maintenance

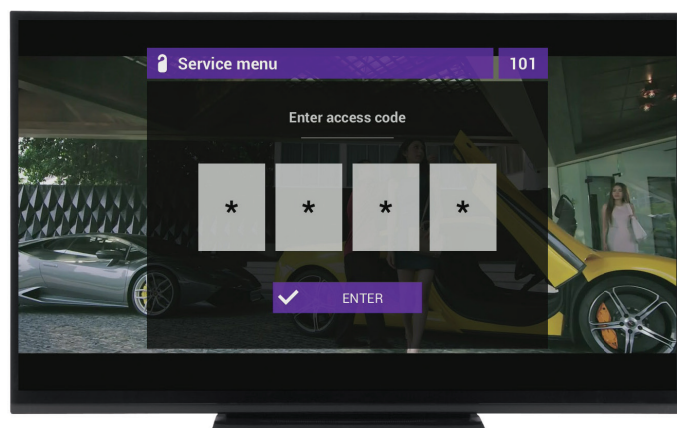


Housekeepers Service menu on guest room TV

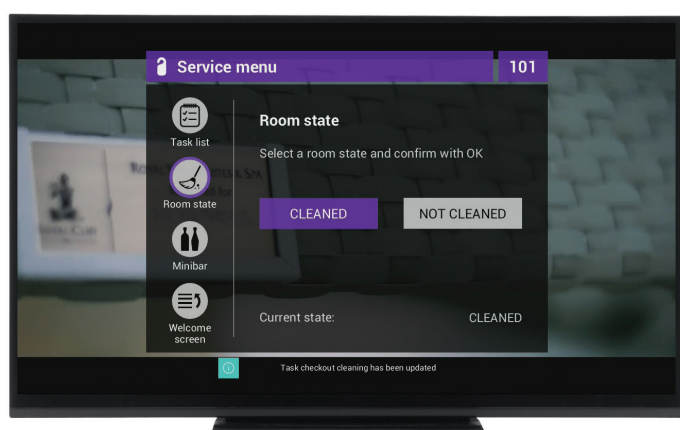
Task list



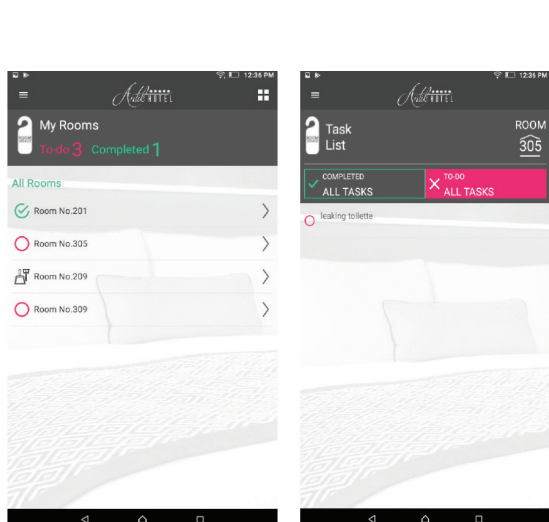
Enter an access code



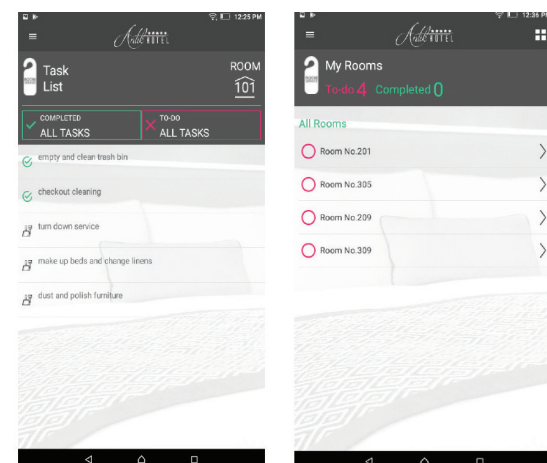
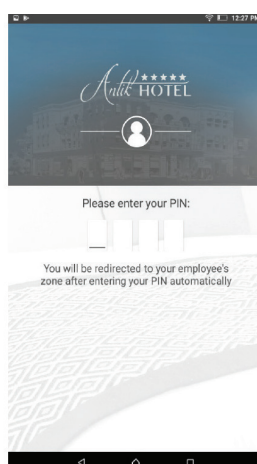
Room state - cleaned



Mini bar - add an item



Housekeepers App
for Android Smartphone



Maintenance Engineer App
for Android Smartphone

GRMS - Guest Room Management System

With ANTIK guest room management system (GRMS) hotel is able to manage different scenario in each guest room. Lighting, temperature or curtains are controlled by guest with touch panel situated in the room or centrally by the hotel. System provides the key to efficiently and centrally manage guestroom energy consumption, gives more comfort, higher security to the room and easy maintenance system.



GRMS – Guest room management system

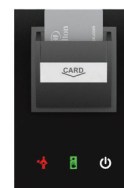
Central unit

- **Display type:** color OLED
- **Resolution:** 128x128/1:1 aspect ratio
- **Visible area:** 26 x 26 mm
- **Maximum number of units:** max. 32 units to one BUS line
- **Communication speed:** 100 Mbps
- **Supply voltage/tolerance:** 27 V DC, -20/ +10%
- **Dimensions:** 90 x 105 x 65 mm



Glass card holder

- **Switching voltage:** 230 V AC or 30 V DC.
- **Operating temperature:** -20 .. +55 °C.
- GCH3-31 supports RFID media with a carrier frequency of 13.56 MHz. Supported card types are MIFARE Ultralight, DESFire 2K, Plus S 4K.
- The GCH3-31 unit is equipped with an 8A relay output and an AgSnO2 contact.
- GCH3-31 are designed for mounting into an installation box.
- **Dimensions:** 142 x 94 x 36 mm.



Touch Screen With Display

- **Supply voltage/tolerance:** 27 V DC, -20 / +10 %
- **Aspect ratio:** 3:4
- **Visible area:** 52,5 x 70 mm
- **Backlight:** active
- **Toupad:** 4-wire resistive
- **Display:** 3,5"
- **Dimensions:** 94 x 94 x 36 mm

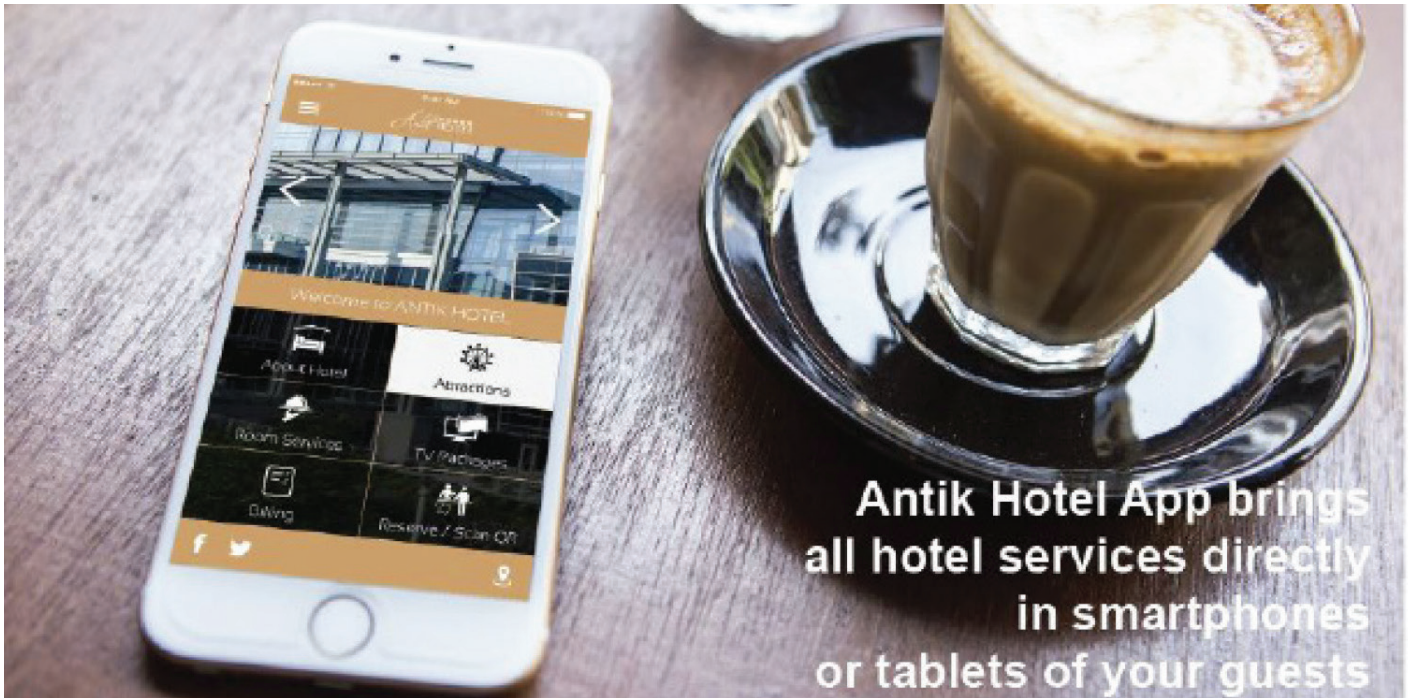


Glass Switch Panel

- **Number of control buttons:** 10
- **Temperature measuring:** YES, built-in temperature sensor
- **Resolution:** by setting 10-bit
- **Installation BUS:** BUS
- **Supply voltage/tolerance:** 27 V DC, -20 / +10 %
- **Dimensions:** 142 x 94 x 36 mm



ANTIK Hotel App



Immediate response to all requests of your guests to make sure they are comfortable, without appearing invasive and compromising their enjoyment of their stay is a must. Earn your bonus in the form of increased customer engagement and revenue growth!

- Mass messages
- Orders
- Reception services
- Live chat
- Feedback
- Social networks
- After stay promotion
- Language selection
- Staff efficiency

Antik Hotel App has the solution

Maximize guests' spending

Upsell your services and earn additional revenue from services provided by hotel.

Gather guests' feedback

Learn how guests feel about your hotel and its services and eliminate negative reviews.

Address your guests in real time

No posters, no brochures. Communicate with your guests immediately.

Build long-term relationship

Address your guests after check-out and make them come to your hotel again!



ANTIK Passenger and Infotainment System



Passenger
Mr. John Cleese
Voyage Info
London - Brighton

Distance & Time
540 km / 5h 30m

Bus Plate
M242 321
Voyage No.
MT069

Weather
23°C 
WINDY

Time & Date
12:23
7 JAN 2016

Seat Number
21



 Watch

 VOD

 Connection

 Games

 e-Book

 Order

 Voyage Info

 JSB

 Kids

 Settings

Grant your customers an enjoyable journey with **Antik Infotainment System**

Let us introduce our new interactive IPTV solution – ANTIK Infotainment system for public transport. Explore new dimensions of active travelling with relaxation, fun and socializing all in extraordinary comfort.

 Watch

 VOD

 Connection

 Games

 e-Book

 Order


 Voyage Info

 USB

 Kids

 Settings


INFORMATION & ENTERTAINMENT



Passenger
Mr. John Cleese
Voyage Info
London - Brighton

Distance & Time
540 km / 5h 30m

Bus Plate
M242 321
Voyage No.
MT069

Weather
23°C 
WINDY

Time & Date
12:23
7 JAN 2016

Seat Number
21


Service Area - Rest Station


07:00	n/a
08:10	n/a
09:30	OMV Rest Station
11:25	Shell Rest Station
13:10	Gatwick Rest Station
14:49	n/a
17:13	n/a
19:50	MOL Rest Station
21:00	Restaurant


Live Road Cameras


Front Camera


Rear Camera





 Watch


 VOD


 Connection


 Games


 e-Book


 Order

 Voyage Info

 USB

 Kids


 Settings



Passenger
Mr. John Cleese
Voyage Info
London - Brighton

Distance & Time
540 km / 5h 30m

Bus Plate
M242 321
Voyage No.
MT069

Weather
23°C 
WINDY

Time & Date
12:23
7 JAN 2016

Seat Number
21


Twilight
2008


AVATAR
2009


TITANIC
1997


Star Wars
2011


Friends with Benefits
2004


 Watch


 VOD

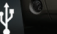
 Connection


 Games


 e-Book

 Order

 Voyage Info

 USB

 Kids

 Settings

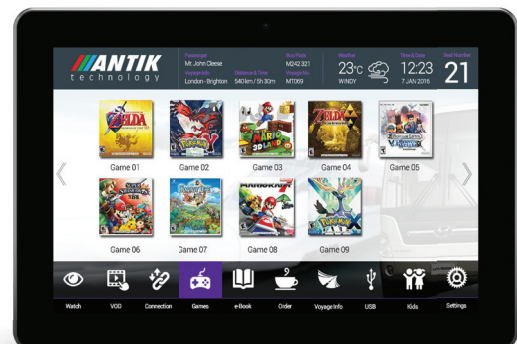
ANTIK BYOD Bring Your Own Device



Key Features

- On demand Video and Music - VOD, MOD
- E-books, Social networks and Games
- Up-to-date Voyage information
- Low running costs
- State-of-art features
- Easy and fast updating of content
- Easily accessible
- Food Order

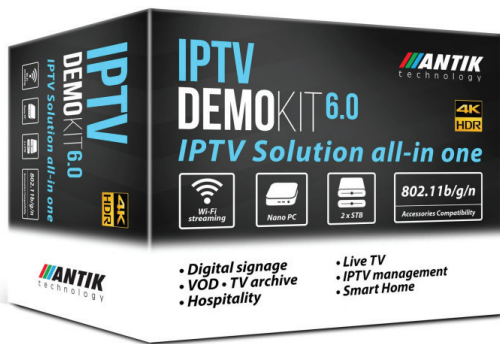
Transform your vehicles into entertainment friendly ones while minimizing installation costs. Use devices of your passengers to entertain them and provide information about the journey directly on their smartphones or tablets.



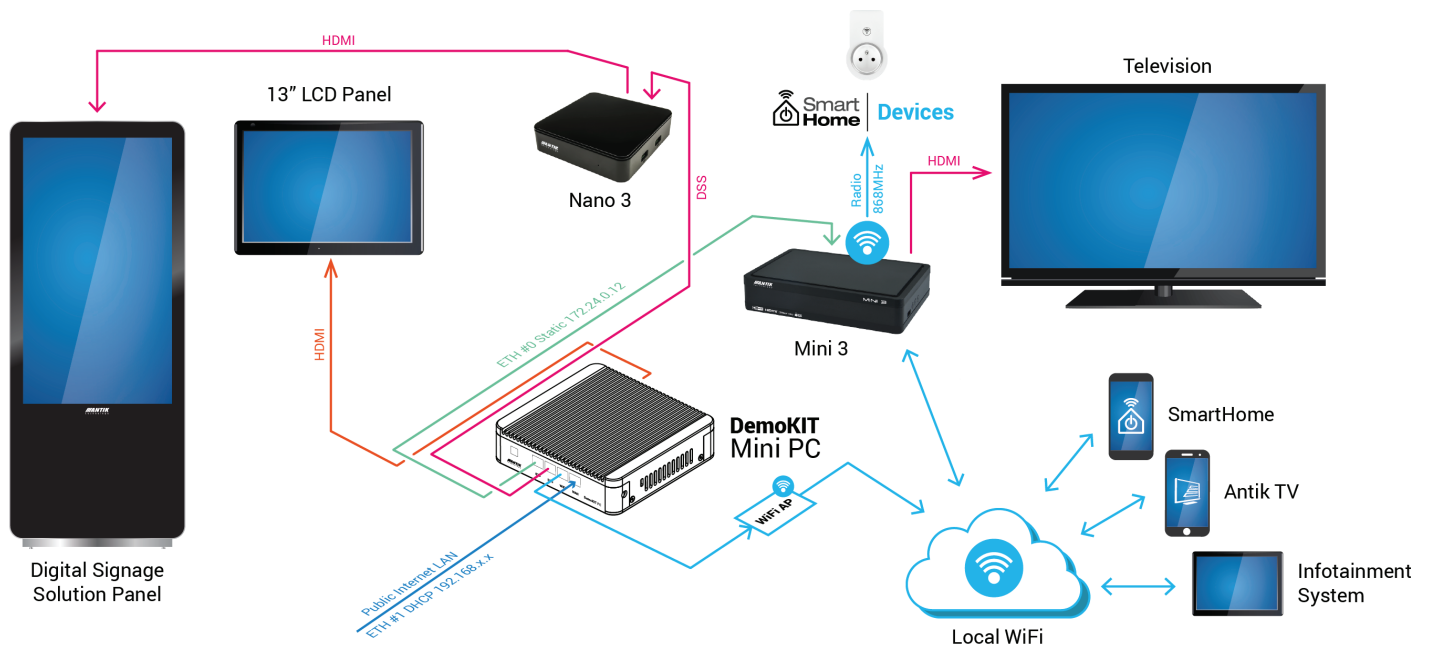
IPTV Solutions all-in one

Most of Antik in one valuable pack

Antik IPTV Demokit offers you the possibility to check all the important features of Antik products. It serves as proof-of-concept of your next IPTV project and gives you chance to become familiar with major SW and HW components. Demokit you can easily run in your network or lab. Preinstalled OS Nano PC with all necessary SW servers such as IPTV Management Server, EPG, Streaming Server, Hospitality Suite, etc. are all part of delivery. 2 4K set-top boxes enabled to use on public internet as well as in multicast network are included. Pre-recorded content includes SD and HD streams, radios, TV archive. Technical support covers (incl. in price) all necessary help with IPTV demokit setup.



- UHD, HD & SD streams
- Catch up TV/TV Archive
- Timeshift
- MediaPlayer
- VOD
- Hospitality IPTV
- Event navigation
- Housekeeping Management
- TV Plugins
- EPG
- Digital Signage
- IPTV Management MaxIM
- SmartHome included



KEY FEATURES



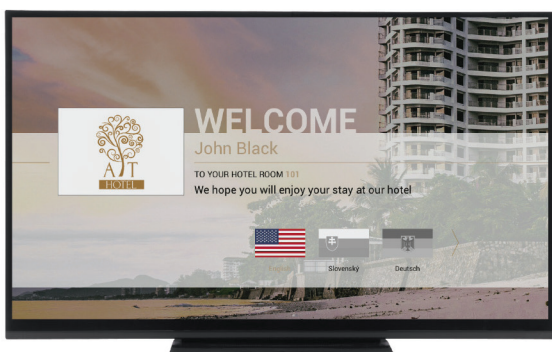
State-of-art User Interface

Easy operation for your SmartTV applications. Browsing web pages will be fast with embedded trackball. Browse the internet without turning the TV off.



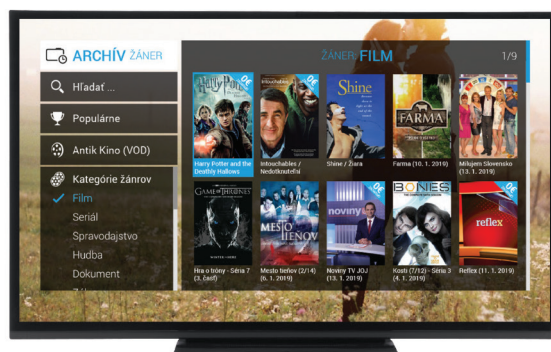
MaxIM Management System

Single Web Interface for all systems setup and control from devices, channels, CMS to signage and housekeeping.



Hospitality TV

Easy-to-learn and customizable access to all Hotel services as 4K TV, Food order, Youtube and much more.



Archive by genre

Enables control of archive program feature which allows users to pause, rewind and forward. All are categorizes by genres and series.



VOD

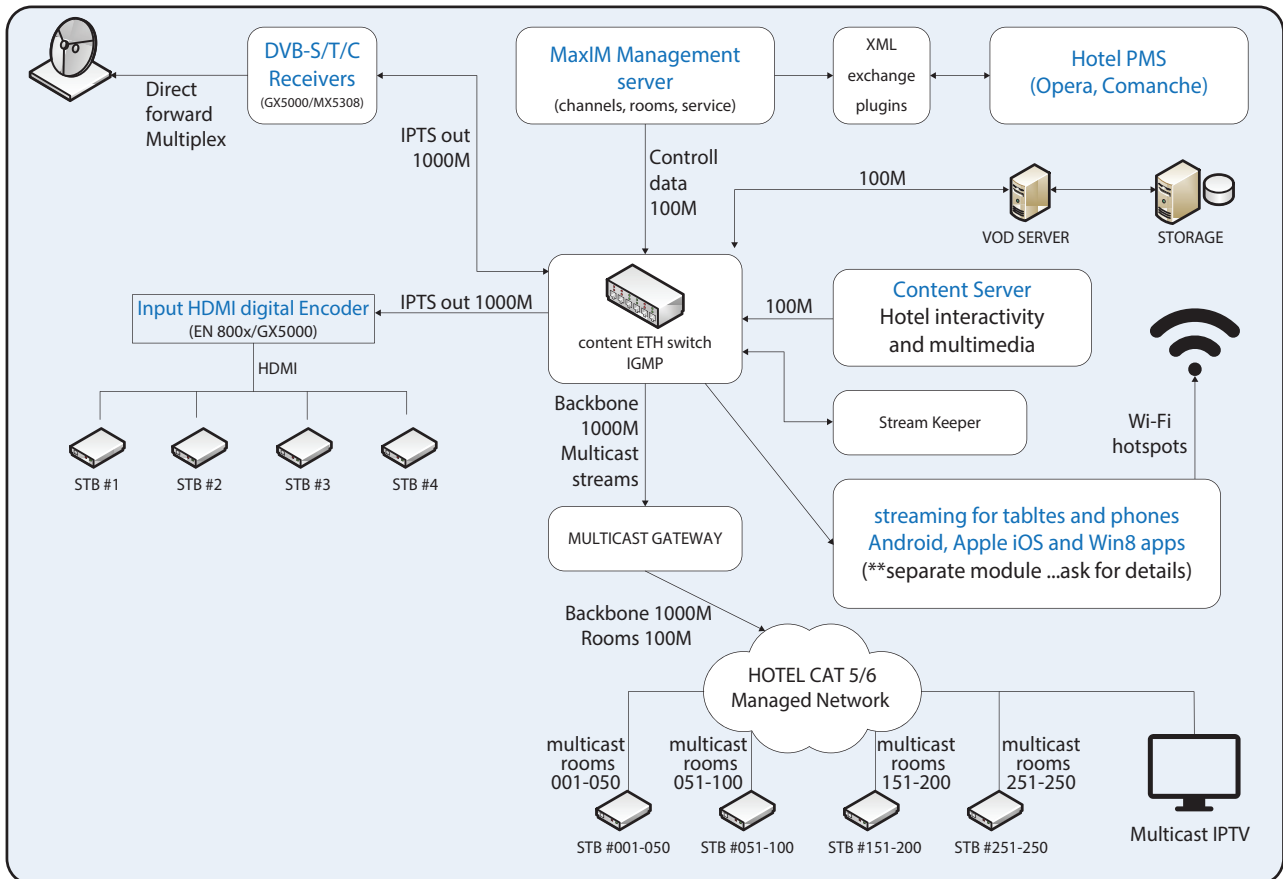
Choose a movie from the database or search some new in your favorite category. Watch trailers, movie description or rank the movie.



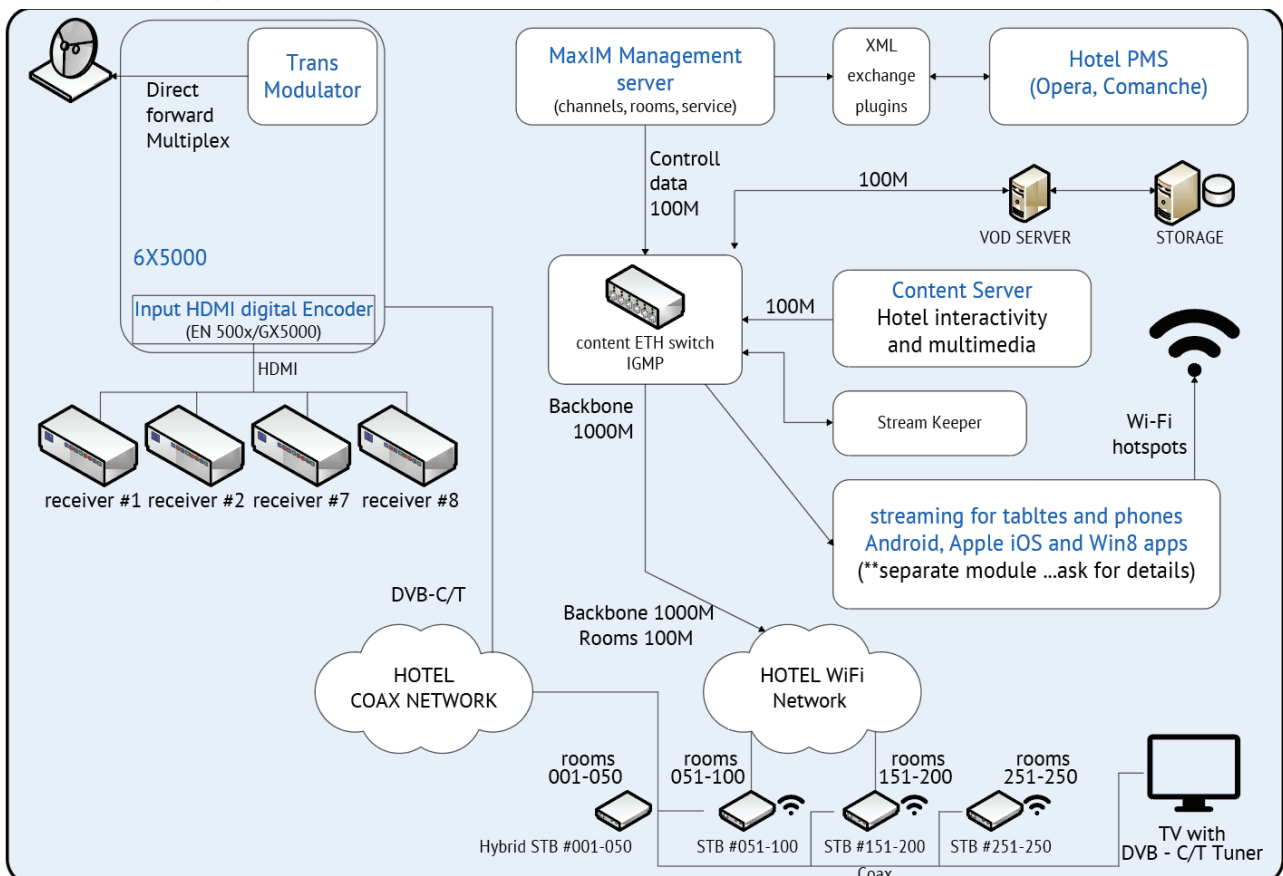
NEW! Hospitality Modules

Digital Signage - Event Navigation - Housekeeping. All inclusive system to remote control of digital advertising, dynamic navigation through premises and facility management.

Hospitality IPTV (Hotels, Hospitals, Schools)



Hospitality Cable + IP Scenario



IPTV DemokIT 6.0 order

Customer copy-order for demo kit

Supplier

ANTIK TECHNOLOGY (CY) LTD.
Account number: 357-029048-326
IBAN: CY06 0020 0195 0000 3570 2904 8326
Beneficiary Bank Name: Bank of Cyprus
Beneficiary Bank Address: Larnaca, Cyprus
SWIFT Address: BCYPCY2N (Bank of Cyprus)
Paypal: kolla@antik.sk

Description	QTY
NANO server with end-to-end demo licensed SW	1
Antik Mini 3	1
Antik Nano 3	1
Wireless multimedia IPTV keyboard	1
5-port GB Switch	1
8 GB Capacity USB Flash Drive	1
Wireless Access Point for multicreen demo	1
USB ETH Adapter	2
ETH cables (2m)	2
Travel adapter for EU/UK/US	1
Antik STB Debug cable	1
SmartHome - Wall Power Plug	1
IP Camera SCI	
Total pcs	16 pcs
Total weight	5 kg
Total price	\$ 665

Optional	QTY
LCD Display 13.3"	1
IP Camera SCI-10	1
Total pcs	18 pcs
Total weight	6,5 kg
Total price	\$ 860

- Shipping Term DDU (Deliver Duty Unpaid)
- Delivery Lead Time: up to 3 weeks after receipt of payment
- Delivery Forwarder: DHL (free of charge)
- Terms of Payment: 100 % value of PO paid in advance by TT/*All bank charges are for the account of the customer
- Price of HW is EXW China /Country of Origin: China
- Warranty period: 23 months * Support included

Customer:

Contact Name:

Tel. Number:

Company Name:

Delivery Address:

E-mail:

Signature:

Purchase order for demo kit

Supplier

ANTIK TECHNOLOGY (CY) LTD.
Account number: 357-029048-326
IBAN: CY06 0020 0195 0000 3570 2904 8326
Beneficiary Bank Name: Bank of Cyprus
Beneficiary Bank Address: Larnaca, Cyprus
SWIFT Address: BCYPCY2N (Bank of Cyprus)
Paypal: kolla@antik.sk

Description	QTY
NANO server with end-to-end demo licensed SW	1
Antik Mini 3	1
Antik Nano 3	1
Wireless multimedia IPTV keyboard	1
5-port GB Switch	1
8 GB Capacity USB Flash Drive	1
Wireless Access Point for multicreen demo	1
USB ETH Adapter	2
ETH cables (2m)	2
Travel adapter for EU/UK/US	1
Antik STB Debug cable	1
SmartHome - Wall Power Plug	1
IP Camera SCI	
Total pcs	16 pcs
Total weight	5 kg
Total price	\$ 665

Optional	QTY
LCD Display 13.3"	1
IP Camera SCI-10	1
Total pcs	18 pcs
Total weight	6,5 kg
Total price	\$ 860

- Shipping Term DDU (Deliver Duty Unpaid)
- Delivery Lead Time: up to 3 weeks after receipt of payment
- Delivery Forwarder: DHL (free of charge)
- Terms of Payment: 100 % value of PO paid in advance by TT/*All bank charges are for the account of the customer
- Price of HW is EXW China /Country of Origin: China
- Warranty period: 23 months * Support included

Customer:

Contact Name:

Tel. Number:

Company Name:

Delivery Address:

E-mail:

Signature:

Notes

[illegible]



ANTIK Technology

Global Office
Carskeho 10
04001 Kosice
Slovakia (European Union)

Tel.: +421 55 30 12345
Fax: +421 55 623 4401
E-mail: info@antiktech.com

Košice / Singapore / Hong Kong / Shenzhen / Dubai / Sydney



www.antiktech.com

11/2019