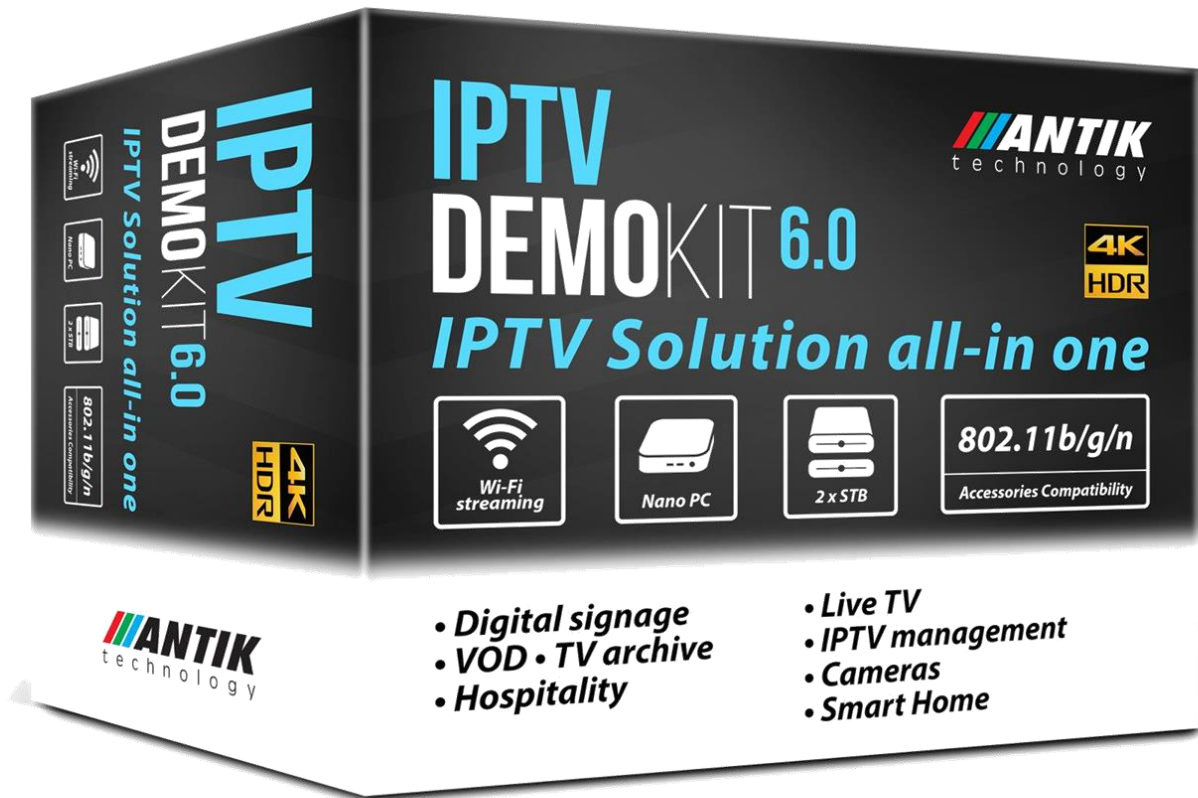


# ANTIK IPTV DEMOKIT 6.0

## USER MANUAL



## License Declaration

Without the prior written permission of ANTIK Technology, no part of this manual shall be added or removed in any form, adaptation, excerpt, translate, reproduce or imitation.

The entire contents of this manual may be changed by ANTIK Technology at any time without prior notice.

Specific features are subject to the actual software features.

©Copyright by ANTIK Technology.

ALL RIGHTS RESERVED

 is a registered trademark of ANTIK Technology.

This manual covers all other product trademarks with the appropriate companies.

Thank you for purchasing the IPTV DemoKIT (IDK). We have put together the IDK to offer our client a good insight about our IPTV solution, and to give you a hand-on experience on how to manage an IPTV system. We hope you will enjoy it and find it useful.

## PACKAGE CONTENT

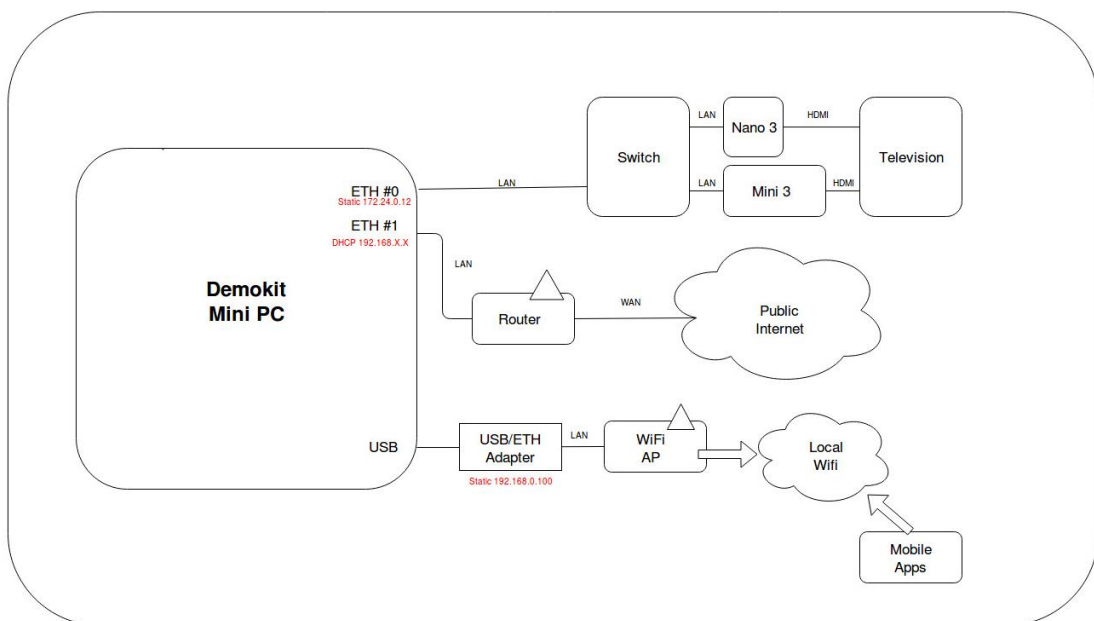
The IDK comprises of the following parts:

- 1 x server Nano PC
- 2 x USB Ethernet Adapter RJ45
- 1 x Nano 3 STB
- 1 x Mini 3 (4 x ETH port STB)
- 1 x Debug Cable (USB to RS-232)
- 1 x Wi-Fi AP
- 1 x 5-port Gigabit Switch
- 1 x 16 GB USB Drive
- 1 x Wireless IPTV Keyboard
- 3 x Ethernet Cable (2m)



# SETTING UP THE IPTV SYSTEM

1. Connect all components by scheme bellow.
2. Connect Gigabit Switch (at least 4-port) to the onboard toward at corner RJ45 Ethernet port (i.e. ETH0).
3. Connect your office router with internet via RJ45 cable to the second Ethernet port (i.e. ETH1).
4. Power ON the system, the Linux OS will boot-up in 3 minutes.
5. Connect the STB to the Gigabit Switch + connect the STB to the TV set and turn the STB on.
6. Open browser in Linux OS – type <http://localhost/> or <http://127.0.0.1> If your Ethernet setup is not working correctly use the button „Reunit network interface“.



## Connection scheme

Note:

- (1) Make sure the server is fully started before turning the STBs on.
- (2) USB RJ45 Ethernet Adapter needs to be connected to LAN, for Internet access and for enabling online support.
- (3) USB-to-RS232 Debug Cable will be used later when necessary, please keep it safe.

# ENTERING IPTV DEMOKIT (Homepage)

<http://localhost/> or <http://127.0.0.1>

This index gives access to manage DemoKIT system components:

- Maxim
- VOD
- Antik Passenger infotainment system, etc.

The screenshot shows the DemoKit homepage with the following sections:

- MaxIM**: Management system integrating all OTT, Hospitality and Digital Signage systems together in one fully customizable software. Control all STBs, Channel packages, EPG or GUI and Promotions on DS & Navigation panels. Great solution for the Hotel owners, allowing to process all guest orders, content displayed on the TVs in the hotel rooms, billing messaging etc.
  - URL: <http://172.24.0.12:201>, <http://10.252.61.53:201>, <http://192.168.0.100:201>
  - Login: admin
  - Password: admin
  - Download user manual
  - Version: v1.0.397
- ANTIK PASSENGER INFOTAINMENT SYSTEM**: Passenger Infotainment system as interactive IPTV solution for public transports. This system allows passengers to watch TV or movies, read e-books, play games or plug the USB into the screen. Up-to-date voyage information and weather conditions are updated regularly and easily accessible. Key feature is the possibility to order food and beverages just by clicking on the icon in the Menu.
  - URL: <http://172.24.0.12:280>, <http://10.252.61.53:280>, <http://192.168.0.100:280>
  - Android app: <http://172.24.0.12:81/res/res.apk>, <http://10.252.61.53:81/res/res.apk>, <http://192.168.0.100:81/res/res.apk>
- VOD - Video on Demand**: End-2-End system for movie content preparation (encoding), storage, balancing the load, streaming and protection. Our robust segment streaming and buffering SW enables you to deliver content even in lower quality internet networks. Video content will start immediately, user doesn't need to wait for downloading full movie as it is instantly streamed to end-devices.
- Register**: Form for user registration with fields for Company, Name, Email, Skype, Telephone, Country, Description, and HDD ID. Includes a Registration button.
- Network Settings**: Table showing network interface details.

Name	IP	MAC
eth0	172.24.0.12	00:0e:c4:cc:56:cb

If ETH0 adapter is not 172.24.0.12 (e.g. eth1, eth2, eth3, etc.) multicast stream is spread on the wrong network. Use „Reunit network interface“ button, reboot computer and check if ETH0 was assigned as ETH0: 172.24.0.12. You can also do it over SSH by removing or editing file: **`rm/etc/udev/rules.f/70-persistent-net.rules`**

## Network Settings

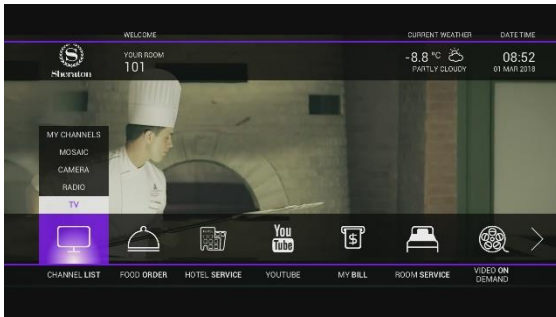
Name	IP	MAC
eth0	172.24.0.12	00:0e:c4:cc:56:cb
eth1	10.252.61.53	00:0e:c4:cc:56:cc
eth2	192.168.0.100	00:13:3b:9c:8f:d8

Reinit network interface

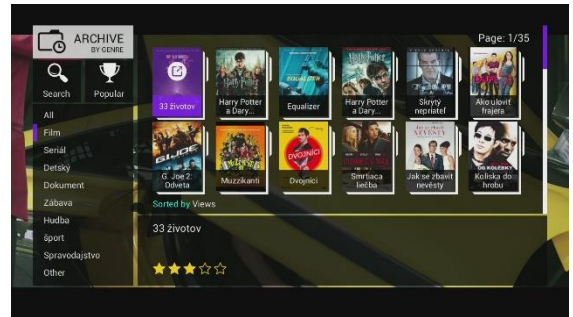
# OPERATING THE STB

It is possible to test:

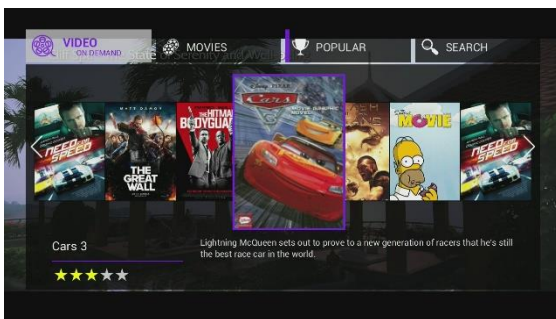
- Live streaming (from demo HDD)
- Archive streaming (archived programs for 1 day, market channel by yellow mark – e.g. Markíza)
- VOD
- EPG
- YouTube
- MaxIM – IPTV Management System (<http://172.24.0.12:201> (user: admin, password: admin))



Live streaming



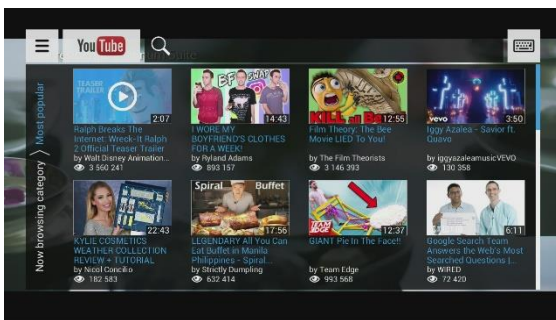
Archive



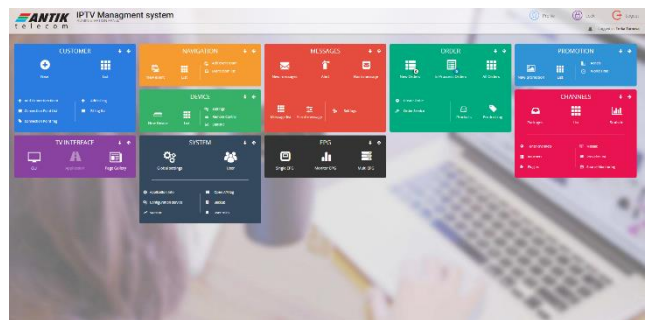
VOD



EPG



YouTube



MaxIM

## UPDATE EPG

EPG are update every day depending on /etc/cron.d/epg parameters.

You can also manually start EPG update running command:

```
Php/opt/antik/epg/maxim_sync.php&& /opt/antik/epg/parser/start.sh
```

EPG are set to automatically update daily.

## TROUBLESHOOTING & FAQ

Q: Channel list not visible/empty.

A: make sure server is started and restart the STB = disconnect and connect again the power supply.

Q: If I connect the STB to public internet, will it work?

A: The STB is prepared to work on public IP address, too. After connecting the STB, it is needed to get right channel list, it means to – „Reload sources“ (press Menu button on remote control, go to Settings, move to „About application“ and on the right side click Reload Sources „Yes“. New channel is now visible in the channel list on the STB). The STB will be then connected to Antik Demo server, where you can watch our demo channel package.

## LICENSE

DemoKIT requires a license for it to function properly. Once you receive the DemoKIT, please contact your sales representative who will set up a support session where our team provides the license.

If you have any additional questions, please contact [demokit@antiktech.com](mailto:demokit@antiktech.com); for online support SKYPE: antikdemokit.